



Stay at our very own  
**Leisureplex Hotels**

*Explore our*  
**SELF DRIVE**  
Hotel Breaks 2023

2 NIGHTS FROM  
**£109<sup>PP</sup>**



Llandudno

[alfatravel.co.uk](http://alfatravel.co.uk) | 01257 248042



The UK's only Employee  
Owned Travel Group

# *Explore the best of the* **BRITISH SEASIDE**

**HELLO...** and a warm welcome to our NEW 2023 Self Drive Hotel Breaks Brochure.

Alfa Travel are part of the Alfa Leisureplex Group, who are proud to be the UK's only Employee Owned Travel Group. Together with our very own chain of Leisureplex Hotels, we have a fantastic collection of unbeatable value for money Self Drive Hotel Break packages.

Our Self Drive Breaks are full of choice, offering a variety of durations to choose from as well as a fabulous selection of locations to explore throughout the UK. You can make your own way to the hotel, explore the resort at your leisure, yet still be reassured you will receive the quality accommodation and premium service that comes with every Alfa Travel holiday.

Whether you have stayed with us before or are looking to holiday with us for the first time, we look forward to welcoming you to one of our Leisureplex Hotels and thank you for your continued support.

*Best Wishes, The Alfa Travel Team*

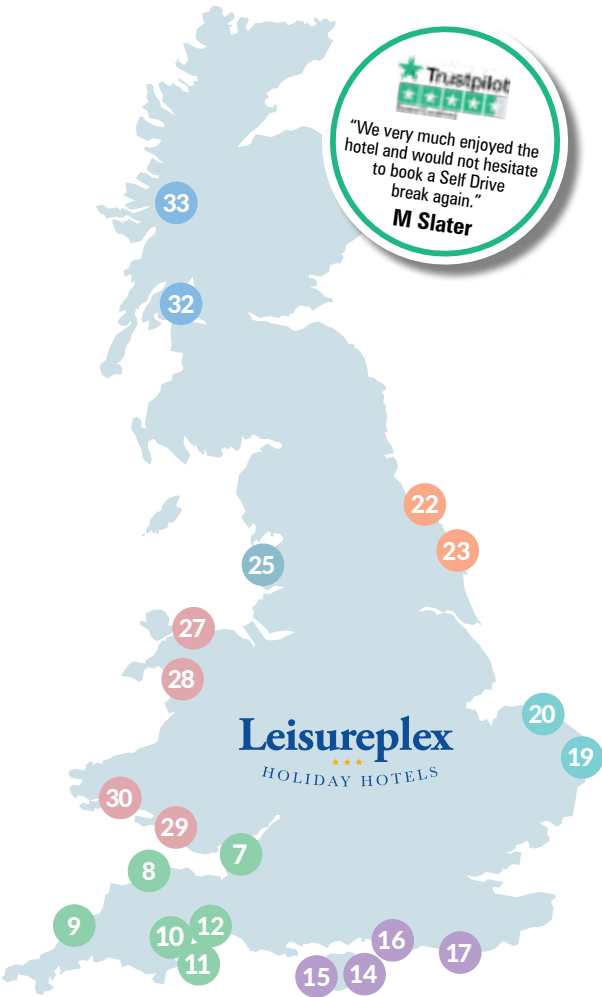
*Free*  
**FERRIES**

## *What's included*

- ✓ Choice of 21 Leisureplex Holiday Hotels
- ✓ Choice of duration
- ✓ Full British breakfast
- ✓ Three course evening meal
- ✓ Ensuite rooms
- ✓ Wi-Fi throughout
- ✓ Entertainment every evening in Spring, Autumn, festive period and most evenings in Summer
- ✓ Isle of Wight and Dunoon holidays include ferry tickets in the holiday cost
- ✓ Celebration packs available at all Leisureplex Hotels. Contact our reservations team on **01257 248042** or email **reservations@alfatravel.co.uk** to add a celebration pack to your booking

# CONTENTS

<b>SOUTH WEST ENGLAND</b>	<b>6</b>
Weston-super-Mare - Anchor Head Hotel	7
Ilfracombe - Imperial Hotel	8
Newquay - Eliot Hotel	9
Torquay - Metropole Hotel	10
Torquay - Regina Hotel	11
Exmouth - Cavendish Hotel	12
<b>SOUTH &amp; SOUTH EAST ENGLAND</b>	<b>13</b>
Sandown - Bayshore Hotel	14
Shanklin - Shanklin Hotel	15
Bognor Regis - Royal Norfolk Hotel	16
Eastbourne - Queens Hotel	17
<b>EAST COAST ENGLAND</b>	<b>18</b>
Great Yarmouth - New Beach Hotel	19
Cromer - Hotel De Paris	20
<b>YORKSHIRE</b>	<b>21</b>
Scarborough - Cumberland Hotel	22
Bridlington - Monarch Hotel	23
<b>NORTH WEST ENGLAND</b>	<b>24</b>
Blackpool - Queens Hotel	25
<b>WALES</b>	<b>26</b>
Llandudno - Hydro Hotel	27
Criccieth - George IV Hotel	28
Porthcawl - Seabank Hotel	29
Tenby - Cliffe Norton Hotel	30
<b>SCOTLAND</b>	<b>31</b>
Dunoon - Selborne Hotel	32
Fort William - Croit Anna Hotel	33
<b>Holiday Supplements</b>	<b>34</b>
<b>Join a coach holiday at the hotel</b>	<b>35</b>



## Financial Security Statement

Alfa Travel are members of the Bonded Coach Holiday Group, overseen by The Association of Bonded Travel Organisers Trust Limited. This is a government approved consumer protection scheme. This ensures that in relation to the holidays described in this brochure (or website) that a Bond, which may be called upon in the unlikely event of the members Insolvency, protects the clients' monies.

Clients are recommended to inspect the current membership certificate at our registered office or alternatively go to [www.bch-uk.org](http://www.bch-uk.org) or telephone 0207 7065 5316 to confirm current membership.

See [alfatravel.co.uk](http://alfatravel.co.uk) for full terms and conditions or see page 34.



# Our Leisureplex HOTELS

At Leisureplex we are so much more than just a hotel group. We want to help you create lasting memories in your home away from home. That is why we place our guests at the heart of what we do. From a warm welcome on arrival, to the very last minute of your stay, our friendly teams will be on hand to make your stay one to remember.

Our strong traditional values are reflected in everything from the hearty restaurant meals to our warm and friendly service.

When you arrive at your resort, you will find our hotels in great locations. They are the perfect base from which to explore the local area. Whichever Leisureplex hotel you choose, you can relax safe in the knowledge that you will receive the quality accommodation and premium service that comes with every Alfa holiday!

Leisureplex  
HOLIDAY HOTELS



## Stunning Locations

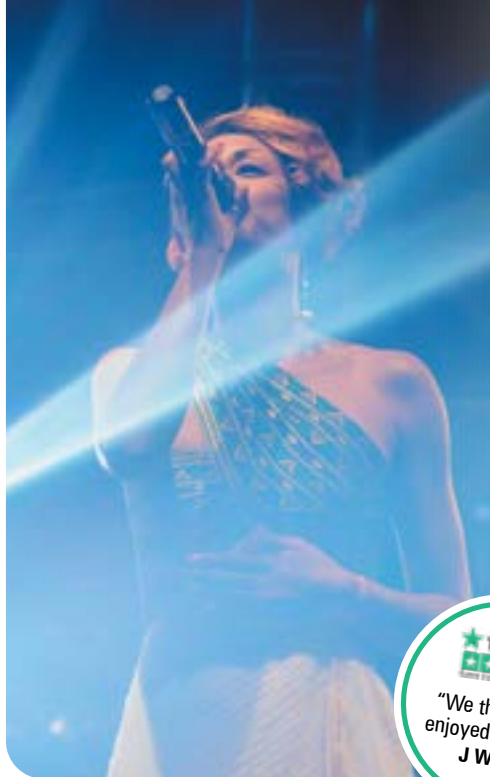
Our hotels can be found in the best seaside locations, with nearby attractions a plenty, each resort has something to offer everyone. Whether you want to explore the local area or relax, you will find most of our hotels situated on the sea front and the perfect setting to soak up the atmosphere.

With 21 hotels across England, Scotland and Wales, you really are spoilt for choice on where to go. From the sunny seascapes in Bognor Regis, the award winning beaches and exotic climate of the English Riviera, or the stunning views over Loch Linnhe in Fort William, our hotels can be found in amazing locations and are all unique, with bucketfuls of character.

## Superb Service from our Friendly Teams

Our customers tell us how much they love our Leisureplex Hotels because of the service they get from our teams when they visit. As an employee owned business, all of the teams at our Leisureplex hotels go that extra mile to ensure you have a great stay, with many of our guests returning time after time.





## Comfortable Relaxing Bedrooms

We've thought of everything you need to have a great holiday! Our en-suite bedrooms come with comfy beds for a great nights sleep, tea and coffee making facilities, flatscreen TV with freeview and radio, hairdryer and free Wi-Fi throughout the hotels so that you can stay connected.

You'll find a comfortable seating area and with many of our bedrooms featuring stunning sea views, you can relax and watch the waves roll in from the comfort of your room.

And if you need toiletries or an iron, just ask our friendly reception teams who will be happy to help!



## Evening Entertainment

Our Leisureplex hotels include entertainment most evenings throughout the year and in Spring, Autumn and throughout the festive period you will find entertainment every evening to enjoy. You'll find live singers, musicians, comedians and dancefloors where you can dance the night away. For bingo lovers, you will also find regular games of bingo, with cash prizes up for grabs.



## Welcoming Lounges and Cosy Bars

All of our hotels are large enough to provide both cosy relaxing lounge areas where you can enjoy a tranquil glass of wine or curl up with a book. Many boast panoramic sea or loch views, where you can sit, relax and watch the world go by.

## Hearty, Home Cooked Food

During your stay, you can enjoy our home cooked food, prepared for you every day by our Chefs and their teams.

Start your day off the right way, with our hearty breakfasts, including a range of continental choices, including cereals, fruit and yoghurts, followed by a traditional full cooked breakfast and a selection of other hot choices. Take your pick from freshly cooked bacon, fluffy hash browns, succulent sausages, eggs cooked the way you like them and more. All served with Tea, Coffee and Toast.

For dinner, we offer a varied three course menu, with a selection of tasty starters, main courses and desserts, including daily vegetarian and vegan meals. We can also cater for many dietary requirements; just let us know when you book your holiday.

For days out, we also offer great value picnic lunches for you to enjoy on your travels, just ask your reception team.

# Explore the SOUTH WEST

Stunning landscapes that melt together with rolling hills and postcard-shot beaches, the largest of all regions in England often feels pleasantly off the beaten track. In this part of the country you can discover endless Areas of Outstanding Natural Beauty, cream teas, fruity cider and crumbly cheeses.



## Great for Walking

The South West of England is home to a variety of stunning walks, check out the highlights below and start planning your next adventure.

**Ilfracombe** (page 8) – explore the Torrs or walk from Ilfracombe to Combe Martin.

**Newquay** (page 9) – discover the Newquay Circular walk, Holywell Bay and the Bedruthen Steps.

**Torquay** (page 10-11) – enjoy a leisurely walk along the Riviera Line and Agatha Christie Mile, explore the caves and cliffs of Babbacombe, Sharkham Park & Berry Head.



## Leisureplex Hotels in this area:

Anchor Head Hotel – Weston-super-Mare,  
Imperial Hotel – Ilfracombe,  
Regina Hotel – Torquay,  
Eliot Hotel – Newquay,  
Metropole Hotel – Torquay,  
Cavendish Hotel – Exmouth



*Visit*

**[www.alfatravel.co.uk](http://www.alfatravel.co.uk)**

For further details




**Leisureplex**  
HOLIDAY HOTELS

**2 NIGHTS**  
FROM  
**£109**  
PER PERSON

## ANCHOR HEAD HOTEL

Weston-super-Mare, Somerset



☎ 01934 620880 ✉ [anchor.weston@leisureplex.co.uk](mailto:anchor.weston@leisureplex.co.uk)  
Claremont Crescent, Weston-super-Mare, Somerset, BS23 2ED.

Weston-super-Mare, Somerset's best known holiday resort, is situated in a sheltered bay at the foot of the Mendip Hills with views across the Bristol Channel to South Wales. There are many Victorian and Edwardian terraces interspersed with colourful parks and gardens. Attractions include the magnificent Grand Pier, a Sea Life centre, dancing in the famous Winter Gardens and top class cabaret and big star names performing at the Playhouse theatre.

Situated by Birnbeck Pier, close to the boating slipway and beach,

with spectacular sea views across the channel from our lounge, restaurant and from many of the hotel's bedrooms. The hotel features a restaurant, a quiet lounge, bar with dancefloor and entertainment on most evenings. The hotel also boasts an outdoor terrace, perfect for catching the sun and enjoying spectacular sea views across the resort.

Weston is close to the historic cities of Bath and Bristol and the resort's position means they are perfect for a day trip with some lovely scenery en-route.

### Additional Information

- ✓ Ground floor rooms available
- ✓ Free on street car parking
- ✓ Room with a view available
- ✓ Free Wi-Fi throughout
- ✓ Lift serves all floors

### Nearby

- ✓ Cheddar Gorge
- ✓ Bath
- ✓ Minehead
- ✓ Wells
- ✓ Street
- ✓ Taunton
- ✓ Bristol

#### 2 Nights (Fri - Sat)

Tour 3100SD

Feb 24	<b>£109</b>
Mar 3 - Apr 7	<b>£119</b>
Apr 14 - May 12	<b>£129</b>
May 19 - Aug 25	<b>£164</b>
Sep 1 - Sep 15	<b>£154</b>
Sep 22 - Nov 24	<b>£129</b>
Dec 27 (Wed-Fri)	<b>£184</b>
Dec 30 (Sat-Mon)	<b>£304</b>

#### 3 Nights (Fri - Sun)

Tour 4100SD

Feb 24	<b>£144</b>
Mar 3 - Mar 24	<b>£154</b>
Mar 31 - Apr 7	<b>£164</b>
Apr 14 - May 12	<b>£174</b>
May 19 - Aug 25	<b>£209</b>
Sep 1 - Sep 15	<b>£199</b>
Sep 22 - Nov 24	<b>£174</b>
Dec 27 (Wed-Sat)	<b>£219</b>
Dec 30 (Sat-Tue)	<b>£359</b>

#### 4 Nights (Mon-Thurs)

Tour 5100SD

Jan 30 - Feb 27	<b>£174</b>
Mar 6 - Mar 27	<b>£184</b>
Apr 3 - Apr 17	<b>£199</b>
Apr 24 - May 15	<b>£219</b>
May 22 - Aug 21	<b>£249</b>
Aug 28 - Sep 18	<b>£239</b>
Sep 25 - Oct 23	<b>£209</b>
Oct 30 - Dec 11	<b>£219</b>
Dec 23 (Sat-Wed)	<b>£469</b>

#### 6 Nights (Sun-Fri)

Tour 102SD

Mar 5 - Mar 26	<b>£239</b>
Apr 2 - Apr 16	<b>£264</b>
Apr 23 - May 14	<b>£294</b>
May 21 - Aug 20	<b>£329</b>
Aug 27 - Sep 17	<b>£304</b>
Sep 24 - Oct 15	<b>£284</b>
Dec 27 (Wed-Tue)	<b>£544</b>

#### 7 Nights (Sat-Fri) or (Sun-Sat)

Tour 100SD

Mar 25 - Mar 26	<b>£274</b>
Apr 1 - Apr 16	<b>£294</b>
Apr 22 - May 14	<b>£319</b>
May 20 - Aug 20	<b>£369</b>
Aug 26 - Sep 17	<b>£349</b>
Sep 23 - Oct 15	<b>£329</b>
Dec 23	<b>£644</b>



**Leisureplex**  
HOLIDAY HOTELS

**HALF PRICE BAR**  
on Spring Breaks  
See page 34

**2 NIGHTS FROM £109 PER PERSON**

**IMPERIAL HOTEL**  
Ilfracombe, Devon

 01271 862536  imperial.ilfracombe@leisureplex.co.uk  
Wilder Road, Ilfracombe, Devon, EX34 9AL.

Ilfracombe is the premier resort in North Devon, situated between the breathtaking scenery of Exmoor to the east and the spectacular beaches of Croyde and Woolacombe to the west. For the energetic there are splendid walks along the Coastal Path, the famous Torrs walks or swimming from the Tunnel beaches and coves. For those who prefer to take things a little bit easier, you can simply stroll through the delightful gardens or watch the ever-changing harbour scene. A boat trip is a "must" during your stay to see the spectacular cliffs of North Devon or visit the magical Lundy Island.

In one of the best positions in Ilfracombe, overlooking Wildersmouth beach and the Landmark Theatre, the hotel is just a short stroll away from the high street and harbour. The hotel features a large restaurant and bar and entertainment room with dancefloor, where you will find entertainment most evenings. You will also find fantastic sea views from many of the hotel's bedrooms.

A boat trip to nearby Lynton and Lynmouth – the 'Little Switzerland' of England – with their unique connecting water operated cliff railway is highly recommended.

Additional Information

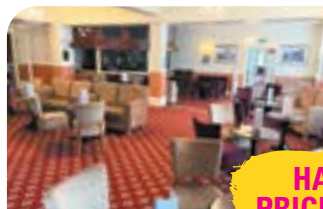
- ✓ Limited free hotel parking, public car parks available nearby
- ✓ Room with a view available
- ✓ Free Wi-Fi throughout
- ✓ Lift to all floors (steps to some rooms on split level floors)

Nearby

- ✓ Lynton & Lynmouth
- ✓ South Molton
- ✓ Bideford
- ✓ Wells
- ✓ Exmoor Steam Railway
- ✓ Lundy Island
- ✓ Barnstaple

2 Nights (Fri - Sat)	3 Nights (Fri-Sun)	4 Nights (Mon-Thurs)	6 Nights (Sun-Fri)	7 Nights (Sat-Fri) or (Sun-Sat)
Tour 3110SD	Tour 4110SD	Tour 5110SD	Tour 112SD	Tour 110SD
Feb 24 <b>£109</b>	Feb 24 <b>£144</b>	Jan 30 - Feb 27 <b>£164</b>	Mar 5 - Mar 26 <b>£239</b>	Mar 25 - Mar 26 <b>£274</b>
Mar 3 - Apr 7 <b>£119</b>	Mar 3 - Mar 24 <b>£154</b>	Mar 6 - Mar 27 <b>£174</b>	Apr 2 - Apr 16 <b>£264</b>	Apr 1 - Apr 16 <b>£284</b>
Apr 14 - May 12 <b>£129</b>	Mar 31 - Apr 7 <b>£164</b>	Apr 3 - Apr 17 <b>£199</b>	Apr 23 - May 14 <b>£284</b>	Apr 22 - May 14 <b>£294</b>
May 19 - Aug 25 <b>£164</b>	Apr 14 - May 12 <b>£174</b>	Apr 24 - May 15 <b>£209</b>	May 21 - Aug 20 <b>£304</b>	May 20 - Sep 17 <b>£329</b>
Sep 1 - Sep 15 <b>£144</b>	May 19 - Aug 25 <b>£199</b>	May 22 - Aug 21 <b>£239</b>	Aug 27 - Sep 17 <b>£294</b>	Sep 23 - Oct 15 <b>£319</b>
Sep 22 - Nov 24 <b>£129</b>	Sep 1 - Sep 15 <b>£184</b>	Aug 28 - Sep 18 <b>£229</b>	Sep 24 - Oct 15 <b>£284</b>	Dec 23 <b>£624</b>
Dec 27 (Wed-Fri) <b>£174</b>	Sep 22 - Nov 24 <b>£174</b>	Sep 25 - Dec 11 <b>£209</b>	Dec 27 (Wed-Tue) <b>£524</b>	
Dec 30 (Sat-Mon) <b>£284</b>	Dec 27 (Wed-Sat) <b>£209</b>	Dec 23 (Sat-Wed) <b>£449</b>		
	Dec 30 (Sat-Tue) <b>£329</b>			





**HALF  
PRICE BAR**  
on Spring Breaks  
See page 34



**Leisureplex**  
HOLIDAY HOTELS

**2 NIGHTS**  
FROM  
**£109**  
PER PERSON

## ELIOT HOTEL

Newquay, Cornwall



☎ 01637 878177 📧 [eliot.newquay@leisureplex.co.uk](mailto:eliot.newquay@leisureplex.co.uk)

Edgcombe Avenue, Newquay, Cornwall, TR7 2NH.

Newquay is Cornwall's premier holiday resort boasting some of the finest coastline and beaches in Europe. Although well known as Britain's surfing capital, there are many other activities and the surrounding countryside has an endless wealth of fascinating places to visit. The heart of the town is the old harbour; it spreads along the cliff tops which stand behind the eleven magnificent sandy beaches. Newquay offers wonderful cliff and beach walks, a picturesque harbour and the variety of activities you would expect from such a major resort.

Close to the magnificent Great Western and Tolcarne beaches with

their crystal clear sparkling waters, the hotel is just a short stroll away from the seafront, resort's shopping area and harbour. The hotel features a comfortable lounge, games room, large restaurant and entertainment room with dancefloor, where entertainment can be found most evenings. The hotel also boasts an outdoor pool, which is open between May-September and relaxing outdoor area where you can soak up the sun and enjoy a drink by the pool.

Along the coast from Newquay you will find many towns and villages which make perfect places to stop and take in the stunning scenery.

### Additional Information

- ✓ Free hotel car parking available
- ✓ Free Wi-Fi throughout
- ✓ Lift to all floors (steps to some rooms on split level floors)

### Nearby

- ✓ Eden Project
- ✓ Bodmin
- ✓ Tintagel
- ✓ St Ives
- ✓ Penzance
- ✓ Lands End
- ✓ Padstow

#### 2 Nights (Fri - Sat)

Tour 3130SD

Feb 24	<b>£109</b>
Mar 3 - Mar 24	<b>£119</b>
Mar 31 - Apr 7	<b>£129</b>
Apr 14 - May 12	<b>£144</b>
May 19 - Aug 25	<b>£164</b>
Sep 1 - Sep 15	<b>£144</b>
Sep 22 - Nov 24	<b>£129</b>
Dec 27 (Wed-Fri)	<b>£174</b>
Dec 30 (Sat-Mon)	<b>£274</b>

#### 3 Nights (Fri-Sun)

Tour 4130SD

Feb 24	<b>£144</b>
Mar 3 - Mar 24	<b>£154</b>
Mar 31 - Apr 7	<b>£164</b>
Apr 14 - May 12	<b>£174</b>
May 19 - Aug 25	<b>£199</b>
Sep 1 - Sep 15	<b>£184</b>
Sep 22 - Nov 24	<b>£174</b>
Dec 27 (Wed-Sat)	<b>£209</b>
Dec 30 (Sat-Tue)	<b>£319</b>

#### 4 Nights (Mon-Thurs)

Tour 5130SD

Jan 30 - Feb 27	<b>£164</b>
Mar 6 - Mar 27	<b>£174</b>
Apr 3 - Apr 17	<b>£199</b>
Apr 24 - May 15	<b>£209</b>
May 22 - Aug 21	<b>£239</b>
Aug 28 - Sep 18	<b>£229</b>
Sep 25 - Oct 23	<b>£219</b>
Oct 30 - Dec 11	<b>£209</b>
Dec 23 (Sat-Wed)	<b>£434</b>

#### 6 Nights (Sun-Fri)

Tour 132SD

Mar 5 - Mar 26	<b>£239</b>
Apr 2 - Apr 16	<b>£264</b>
Apr 23 - May 14	<b>£294</b>
May 21 - Aug 20	<b>£319</b>
Aug 27 - Sep 17	<b>£294</b>
Sep 24 - Oct 15	<b>£284</b>
Dec 27 (Wed-Tue)	<b>£504</b>

#### 7 Nights (Sat-Fri) or (Sun-Sat)

Tour 130SD

Mar 25 - Mar 26	<b>£274</b>
Apr 1 - Apr 16	<b>£284</b>
Apr 22 - May 14	<b>£299</b>
May 20 - Aug 20	<b>£359</b>
Aug 26 - Sep 17	<b>£329</b>
Sep 23 - Oct 15	<b>£304</b>
Dec 23	<b>£609</b>



## METROPOLE HOTEL

Torquay, South Devon



☎ 01803 293682    📧 metropole.torquay@leisureplex.co.uk  
Belgrave Road, Torquay, South Devon, TQ2 5HN.

**2 NIGHTS**  
FROM  
**£109**  
PER PERSON

Torquay is one of Britain's most famous resorts, situated at the heart of 22 miles of unspoilt coastline known as the "English Riviera" because of its mild climate, sparkling blue waters, blue-flag beaches, attractive gardens and palm tree lined seafront. It offers variety, day and night, from its bustling harbour and marina to its exclusive shops, sophisticated restaurants and bars. Torquay's spectacular modernised waterfront provides a continental atmosphere with its attractive cafes and shops, luxury yachts and beautiful footbridge across the inner harbour

Situated in the heart of Torquay's Hotel district, the Metropole Hotel offers

a great location to explore beautiful Torquay and the well-renowned English Riviera. The hotel features a restaurant, relaxing lounge and bar with dancefloor, where you can find entertainment on most evenings. The hotel has undergone a multi-million pound refurbishment since joining the Group in 2019. The hotel also boasts an outdoor seating area, perfect for soaking up the sun.

There are many local attractions including Paignton Zoo, Babbacombe Model Village, Kent's Cavern, Torbay Steam Railway and Cockington thatched village.

### Additional Information

- ✓ Free hotel car parking available
- ✓ Ground floor rooms available
- ✓ Room with a view available
- ✓ Free Wi-Fi throughout
- ✓ Lift serving various floors

### Nearby

- ✓ Exeter
- ✓ Plymouth
- ✓ Paignton
- ✓ Teignmouth
- ✓ South Devon Railway
- ✓ Dartmoor

2 Nights (Fri - Sat)	3 Nights (Fri-Sun)	4 Nights (Mon-Thurs)	6 Nights (Sun-Fri)	7 Nights (Sat-Fri) or (Sun-Sat)
Tour 3151SD	Tour 4151SD	Tour 5151SD	Tour 153SD	Tour 151SD
Feb 24 <b>£109</b>	Feb 24 <b>£144</b>	Jan 30 - Feb 27 <b>£164</b>	Mar 5 - Mar 26 <b>£249</b>	Mar 25 - Mar 26 <b>£284</b>
Mar 3 - Mar 24 <b>£119</b>	Mar 3 - Mar 24 <b>£154</b>	Mar 6 - Mar 27 <b>£184</b>	Apr 2 - Apr 16 <b>£274</b>	Apr 1 - Apr 16 <b>£304</b>
Mar 31 - Apr 7 <b>£129</b>	Mar 31 - Apr 7 <b>£164</b>	Apr 3 - Apr 17 <b>£199</b>	Apr 23 - May 14 <b>£319</b>	Apr 22 - May 14 <b>£349</b>
Apr 14 - May 12 <b>£144</b>	Apr 14 - May 12 <b>£184</b>	Apr 24 - May 15 <b>£229</b>	May 21 - Aug 20 <b>£354</b>	May 20 - Aug 20 <b>£394</b>
May 19 - Aug 25 <b>£174</b>	May 19 - Aug 25 <b>£209</b>	May 22 - Aug 21 <b>£249</b>	Aug 27 - Sep 17 <b>£319</b>	Aug 26 - Sep 17 <b>£359</b>
Sep 1 - Sep 15 <b>£144</b>	Sep 1 - Sep 15 <b>£199</b>	Aug 28 - Sep 18 <b>£239</b>	Sep 24 - Oct 15 <b>£304</b>	Sep 23 - Oct 15 <b>£349</b>
Sep 22 - Oct 27 <b>£129</b>	Sep 22 - Oct 27 <b>£174</b>	Sep 25 - Oct 23 <b>£219</b>	Dec 27 (Wed-Tue) <b>£544</b>	Dec 23 <b>£654</b>
Nov 3 - Nov 24 <b>£144</b>	Nov 3 - Dec 1 <b>£184</b>	Oct 30 - Dec 11 <b>£229</b>		
Dec 27 (Wed-Fri) <b>£184</b>	Dec 27 (Wed-Sat) <b>£219</b>	Dec 23 (Sat-Wed) <b>£479</b>		
Dec 30 (Sat-Mon) <b>£319</b>	Dec 30 (Sat-Tue) <b>£359</b>			


**Leisureplex**  
HOLIDAY HOTELS

## REGINA HOTEL

Torquay, South Devon



☎ 01803 292904 📧 [regina.torquay@leisureplex.co.uk](mailto:regina.torquay@leisureplex.co.uk)

Victoria Parade, Torquay, South Devon, TQ1 2BE.

**2 NIGHTS**  
FROM  
**£109**  
PER PERSON

Torquay is one of Britain's most famous resorts, situated at the heart of 22 miles of unspoilt coastline, often referred to as the "English Riviera". It has a mild climate, sparkling blue waters and in its beautiful public gardens you will see subtropical plants and palm trees. Torquay has something to offer everyone: by day you can relax on one of the clean sandy beaches, explore the bustling harbour and marina and the excellent shops or if you are feeling more active there are lovely walks, or activities such as sailing, bowls, golf or fishing. By night you'll be spoilt for choice:

there are theatres and cabarets and of course you'll see the lights illuminating the promenade reflected across the beautiful bay.

You can enjoy the spectacular views of the harbour from the hotel's bar and lounge and from many of the bedrooms. The hotel features a restaurant and bar with dance floor and entertainment most evenings.

There are many local attractions including Paignton Zoo, Babbacombe Model Village, Kent's Cavern, Torbay Steam Railway and Cockington thatched village.

### Additional Information

- ✓ Public car park directly opposite the hotel
- ✓ Room with a view available
- ✓ Free Wi-Fi throughout
- ✓ Lift serves all floors

### Nearby

- ✓ Exeter
- ✓ Plymouth
- ✓ Paignton
- ✓ Teignmouth
- ✓ South Devon Railway
- ✓ Dartmoor

2 Nights (Fri - Sat)	3 Nights (Fri-Sun)	4 Nights (Mon-Thurs)	6 Nights (Sun-Fri)	7 Nights (Sat-Fri) or (Sun-Sat)
Tour 3150SD	Tour 4150SD	Tour 5150SD	Tour 152SD	Tour 150SD
Feb 24 <b>£109</b>	Feb 24 <b>£144</b>	Jan 30 - Feb 27 <b>£164</b>	Mar 5 - Mar 26 <b>£249</b>	Mar 25 - Mar 26 <b>£284</b>
Mar 3 - Mar 24 <b>£119</b>	Mar 3 - Mar 24 <b>£154</b>	Mar 6 - Mar 27 <b>£184</b>	Apr 2 - Apr 16 <b>£274</b>	Apr 1 - Apr 16 <b>£304</b>
Mar 31 - Apr 7 <b>£129</b>	Mar 31 - Apr 7 <b>£164</b>	Apr 3 - Apr 17 <b>£199</b>	Apr 23 - May 14 <b>£319</b>	Apr 22 - May 14 <b>£349</b>
Apr 14 - May 12 <b>£144</b>	Apr 14 - May 12 <b>£184</b>	Apr 24 - May 15 <b>£229</b>	May 21 - Aug 20 <b>£354</b>	May 20 - Aug 20 <b>£394</b>
May 19 - Aug 25 <b>£174</b>	May 19 - Aug 25 <b>£209</b>	May 22 - Aug 21 <b>£249</b>	Aug 27 - Sep 17 <b>£319</b>	Aug 26 - Sep 17 <b>£359</b>
Sep 1 - Sep 15 <b>£144</b>	Sep 1 - Sep 15 <b>£199</b>	Aug 28 - Sep 18 <b>£239</b>	Sep 24 - Oct 15 <b>£304</b>	Sep 23 - Oct 15 <b>£349</b>
Sep 22 - Oct 27 <b>£129</b>	Sep 22 - Oct 27 <b>£174</b>	Sep 25 - Oct 23 <b>£219</b>	Dec 27 (Wed-Tue) <b>£544</b>	Dec 23 <b>£654</b>
Nov 3 - Nov 24 <b>£144</b>	Nov 3 - Nov 24 <b>£184</b>	Oct 30 - Dec 11 <b>£229</b>		
Dec 27 (Wed-Fri) <b>£184</b>	Dec 27 (Wed-Sat) <b>£219</b>	Dec 23 (Sat-Wed) <b>£479</b>		
Dec 30 (Sat-Mon) <b>£319</b>	Dec 30 (Sat-Tue) <b>£359</b>			



## CAVENDISH HOTEL

Exmouth



☎ 01395 272528 ✉ [cavendish.exmouth@leisureplex.co.uk](mailto:cavendish.exmouth@leisureplex.co.uk)

The Esplanade, Exmouth, Devon, EX8 1BE.

**2 NIGHTS**  
FROM  
**£109**  
PER PERSON

Exmouth offers a rich mixture of immaculate sands, lovely gardens, a busy marina and a wide range of sports facilities that combine to make it an excellent resort for all ages and interests. To the South the resort overlooks Lyme Bay, while to the West it looks across the estuary of the River Exe to the Haldon Hills and Dawlish Warren. There are boat trips aplenty but also lots to do on dry land with good shops, a museum, many old pubs and good walks at every turn. For the more active there is a public swimming pool, golf, and all forms of water sports including a sailing school.

Overlooking Exmouth's fine golden sands and expansive bay, the hotel is located on the seafront just a few minutes stroll from the shopping area. You will find spectacular views across the bay from many of the hotel's bedrooms. The hotel features a modern restaurant, bar lounge and entertainment room with dancefloor, where you will find entertainment on most evenings.

The coast from Exmouth to Dorset has been officially ranked alongside the Grand Canyon and Great Barrier Reef as one of the natural wonders of the world!

### Additional Information

- ✓ Ground floor rooms available
- ✓ Free hotel car parking available
- ✓ Room with a view available
- ✓ Free Wi-Fi throughout
- ✓ Lift serves all floors

### Nearby

- ✓ Sidmouth
- ✓ Seaton
- ✓ Exeter
- ✓ Torquay
- ✓ Lyme Regis
- ✓ Teignmouth & Dawlish

2 Nights (Fri - Sat)	3 Nights (Fri-Sun)	4 Nights (Mon-Thurs)	6 Nights (Sun-Fri)	7 Nights (Sat-Fri) or (Sun-Sat)
Tour 3155SD	Tour 4155SD	Tour 5155SD	Tour 157SD	Tour 155SD
Feb 24 <b>£109</b>	Feb 24 <b>£144</b>	Jan 30 - Feb 27 <b>£174</b>	Mar 5 - Mar 26 <b>£264</b>	Mar 25 - Mar 26 <b>£294</b>
Mar 3 - Mar 24 <b>£119</b>	Mar 3 - Mar 24 <b>£154</b>	Mar 6 - Mar 27 <b>£184</b>	Apr 2 - Apr 16 <b>£284</b>	Apr 1 - Apr 16 <b>£319</b>
Mar 31 - Apr 7 <b>£129</b>	Mar 31 - Apr 7 <b>£174</b>	Apr 3 - Apr 17 <b>£209</b>	Apr 23 - May 14 <b>£329</b>	Apr 22 - May 14 <b>£369</b>
Apr 14 - May 12 <b>£144</b>	Apr 14 - May 12 <b>£199</b>	Apr 24 - May 15 <b>£239</b>	May 21 - Aug 20 <b>£369</b>	May 20 - Aug 20 <b>£404</b>
May 19 - Aug 25 <b>£164</b>	May 19 - Aug 25 <b>£219</b>	May 22 - Aug 21 <b>£274</b>	Aug 27 - Sep 17 <b>£329</b>	Aug 26 - Sep 17 <b>£369</b>
Sep 1 - Sep 15 <b>£154</b>	Sep 1 - Sep 15 <b>£209</b>	Aug 28 - Sep 18 <b>£264</b>	Sep 24 - Oct 15 <b>£304</b>	Sep 23 - Oct 15 <b>£339</b>
Sep 22 - Nov 24 <b>£129</b>	Sep 22 - Nov 24 <b>£174</b>	Sep 25 - Dec 11 <b>£219</b>	Dec 27 (Wed-Tue) <b>£544</b>	Dec 26 - Dec 27 <b>£544</b>
Dec 27 (Wed-Fri) <b>£184</b>	Dec 27 (Wed-Sat) <b>£219</b>	Dec 23 (Sat-Wed) <b>£489</b>		
Dec 30 (Sat-Mon) <b>£319</b>	Dec 30 (Sat-Tue) <b>£369</b>			

# *Explore the* **SOUTH & SOUTH EAST**

Visit the South of England for the chance to step back in time in medieval villages and quintessential coastal towns, or why not explore the myths and legends of smugglers along England's stunning South Coastline. Blending festivals, culture, history and breathtaking scenery, you'll never be short on things to do in the UK's sunniest region.



## **Great for Walking**

South East England's beautiful and diverse landscape can take you from spectacular stretches of coastline, through lush green rolling countryside to timeless villages. We've highlighted some of our favourite walks near to our hotels in the area.

**Sandown Isle of Wight** (page 14) – enjoy a leisurely walk or run along the stunning 10km out and back route along the seafront from Sandown to Shanklin or why not follow The Red Squirrel Trail.

**Eastbourne** (page 17) – Beachy Head makes a great destination for a bracing walk. Other walks include Eastbourne to Alfriston or Normans Bay.



## **Leisureplex Hotels in this area:**

Bayshore Hotel – Sandown (Isle of Wight),  
Shanklin Hotel – Shanklin (Isle of Wight),  
Royal Norfolk Hotel – Bognor Regis,  
Queens Hotel – Eastbourne



Beachy Head, Eastbourne





BAYSHORE HOTEL

Isle of Wight, Sandown



☎ 01983 403154    ✉ bayshore.sandown@leisureplex.co.uk  
12-16 Pier Street, Sandown, Isle Of Wight, PO36 8JX.

The Isle of Wight has a great deal to offer with many superb beaches, mile upon mile of stunning countryside and coastal walks and all the usual modern holiday facilities in the resorts. Sandown is the island's principal resort, and offers a wealth of entertainments. Sandown Bay is the largest on the island and offers a long, safe, sandy beach framed at either end by stunning white cliffs contrasting with rich blue sea.

Dinosaur Isle interactive museum offers life-like dinosaur models and skeletons. Sandown's esplanades and sea wall walks stretch from Yaverland southwards through Lake to Shanklin

Chine. Other attractions include Brown's Pleasure Park, the award-winning Big Cat Sanctuary and the Museum of Geology. Nearby Brading has a Doll Museum and a Roman Villa complete with mosaic floors.

In a magnificent position on the sea front, across from Sandown's Pier and beach and close to the resort's shopping area. The hotel features a light and airy restaurant with views across the sea, where you will find entertainment most evenings. You will also find spectacular sea views from many of the hotel's bedrooms or the hotel sun lounge.

Additional Information

- ✓ Chargeable on street parking
- ✓ Room with a view available
- ✓ Free Wi-Fi throughout
- ✓ Lift serves all floors

Nearby

- ✓ Isle of Wight Steam Railway
- ✓ Ryde
- ✓ Brading Roman Villa
- ✓ Ventnor
- ✓ Carisbrooke Castle
- ✓ Shanklin Chine

2 Nights (Fri - Sat)	3 Nights (Fri-Sun)	4 Nights (Mon-Thurs)	6 Nights (Sun-Fri)	7 Nights (Sat-Fri) or (Sun-Sat)
Tour 3195SD	Tour 4195SD	Tour 5195SD	Tour 197SD	Tour 195SD
Feb 24 <b>£129</b>	Feb 24 <b>£164</b>	Jan 30 - Feb 27 <b>£184</b>	Mar 5 - Mar 26 <b>£249</b>	Mar 25 - Mar 26 <b>£284</b>
Mar 3 - Mar 24 <b>£144</b>	Mar 3 - Mar 24 <b>£174</b>	Mar 6 - Mar 27 <b>£199</b>	Apr 2 - Apr 16 <b>£274</b>	Apr 1 - Apr 16 <b>£304</b>
Mar 31 - Apr 7 <b>£164</b>	Mar 31 - Apr 7 <b>£184</b>	Apr 3 - Apr 17 <b>£219</b>	Apr 23 - May 14 <b>£319</b>	Apr 22 - May 14 <b>£339</b>
Apr 14 - May 12 <b>£174</b>	Apr 14 - May 12 <b>£209</b>	Apr 24 - May 15 <b>£249</b>	May 21 - Aug 20 <b>£339</b>	May 20 - Aug 20 <b>£384</b>
May 19 - Aug 25 <b>£199</b>	May 19 - Aug 25 <b>£229</b>	May 22 - Aug 21 <b>£274</b>	Aug 27 - Sep 17 <b>£319</b>	Aug 26 - Sep 17 <b>£349</b>
Sep 1 - Sep 15 <b>£184</b>	Sep 1 - Sep 15 <b>£219</b>	Aug 28 - Sep 18 <b>£264</b>	Sep 24 - Oct 15 <b>£304</b>	Sep 23 - Oct 15 <b>£329</b>
Sep 22 - Oct 27 <b>£154</b>	Sep 22 - Nov 24 <b>£199</b>	Sep 25 - Dec 11 <b>£229</b>	Dec 27 (Wed-Tue) <b>£554</b>	Dec 23 <b>£634</b>
Nov 3 - Nov 24 <b>£164</b>	Dec 27 (Wed-Sat) <b>£209</b>	Dec 23 (Sat-Wed) <b>£469</b>		
Dec 27 (Wed-Fri) <b>£174</b>	Dec 30 (Sat-Tue) <b>£369</b>			
Dec 30 (Sat-Mon) <b>£319</b>				


**Leisureplex**  
HOLIDAY HOTELS

**2 NIGHTS**  
FROM  
**£144**  
PER PERSON

## SHANKLIN HOTEL

Isle of Wight, Shanklin



☎ 01983 862286 📧 shanklin.shanklin@leisureplex.co.uk  
Clarendon Road, Shanklin, Isle of Wight, PO37 6DP.

Shanklin boasts a long, safe sandy beach which lies at the foot of the spectacular cliffs on which most of the town is situated. The two are connected by a cliff lift. The traditional seaside part of town blends into the picturesque thatched cottages of Shanklin Old Town at the head of the impressive Shanklin Chine. The delightful nature trail through the Chine is not to be missed and includes a surprising relic of the Second World War – a section of PLUTO, the Pipeline Under The Ocean. Although a quieter resort than Sandown, it nevertheless has its own theatre, lively pubs and entertainments.

Gardens in Shanklin are a delight to visit. Take a stroll in the Big Mead, adjacent to historic St. Blasius Church, or along the spectacular coastal paths to Sandown or Bonchurch.

Situated in Shanklin Town, the Shanklin Hotel is one of the best known hotels on the island, with superb views across the resort from its restaurant and many bedrooms. Facilities include a splendid bar and indoor swimming pool. In the hotel's spectacular Starlight restaurant, you will find a dancefloor and entertainment to enjoy on most evenings.

### Additional Information

- ✓ Beach lift nearby
- ✓ Free hotel car parking available
- ✓ Indoor swimming pool
- ✓ Room with a view available
- ✓ Free Wi-Fi throughout
- ✓ Lift serves all floors

### Nearby

- ✓ Shanklin Chine
- ✓ Godshill
- ✓ Isle of Wight Steam Railway
- ✓ Wroxall
- ✓ Ventnor
- ✓ Old Shanklin Village

2 Nights (Fri - Sat)	3 Nights (Fri-Sun)	4 Nights (Mon-Thurs)	6 Nights (Sun-Fri)	7 Nights (Sat-Fri) or (Sun-Sat)
Tour 3200SD	Tour 4200SD	Tour 5200SD	Tour 202SD	Tour 200SD
Feb 24 <b>£144</b>	Feb 24 <b>£174</b>	Jan 30 - Feb 27 <b>£199</b>	Mar 5 - Mar 26 <b>£264</b>	Mar 25 - Mar 26 <b>£294</b>
Mar 3 - Mar 24 <b>£154</b>	Mar 3 - Mar 24 <b>£184</b>	Mar 6 - Mar 27 <b>£209</b>	Apr 2 - Apr 16 <b>£284</b>	Apr 1 - Apr 16 <b>£319</b>
Mar 31 - Apr 7 <b>£174</b>	Mar 31 - Apr 7 <b>£199</b>	Apr 3 - Apr 17 <b>£229</b>	Apr 23 - May 14 <b>£329</b>	Apr 22 - May 14 <b>£359</b>
Apr 14 - May 12 <b>£184</b>	Apr 14 - May 12 <b>£219</b>	Apr 24 - May 15 <b>£264</b>	May 21 - Aug 20 <b>£369</b>	May 20 - Aug 20 <b>£414</b>
May 19 - Aug 25 <b>£209</b>	May 19 - Aug 25 <b>£239</b>	May 22 - Aug 21 <b>£284</b>	Aug 27 - Sep 17 <b>£349</b>	Aug 26 - Sep 17 <b>£384</b>
Sep 1 - Sep 15 <b>£199</b>	Sep 1 - Sep 15 <b>£229</b>	Aug 28 - Sep 18 <b>£274</b>	Sep 24 - Oct 15 <b>£319</b>	Sep 23 - Oct 15 <b>£349</b>
Sep 22 - Oct 27 <b>£164</b>	Sep 22 - Nov 24 <b>£209</b>	Sep 25 - Dec 11 <b>£239</b>	Dec 27 (Wed-Tue) <b>£569</b>	Dec 23 <b>£654</b>
Nov 3 - Nov 24 <b>£174</b>	Dec 27 (Wed-Sat) <b>£219</b>	Dec 23 (Sat-Wed) <b>£489</b>		
Dec 27 (Wed-Fri) <b>£174</b>	Dec 30 (Sat-Tue) <b>£424</b>			
Dec 30 (Sat-Mon) <b>£369</b>				



**FREE DRINKS**  
on Spring Breaks  
See page 34

**2 NIGHTS FROM £109 PER PERSON**

## ROYAL NORFOLK HOTEL

Bognor Regis, West Sussex



☎ 01243 826222 ✉ [royalnorfolk.bognor@leisureplex.co.uk](mailto:royalnorfolk.bognor@leisureplex.co.uk)  
The Esplanade, Bognor Regis, West Sussex, PO21 2LH.

Officially the sunniest town in Britain, Bognor Regis is an old-school seaside resort in West Sussex. It became fashionable in the reign of George III and has been frequented by royalty on numerous occasions. The resort is flat and has an excellent promenade walk. Enjoy the live music from the bandstand in the charming grounds of Hotham Park, take a short trip to Arundel which is home to Arundel Castle and Gardens, or explore the Tudor Market Cross and Norman Cathedral surrounded by a host of independent shops. The South Downs National Park is also just a stone's throw away and well worth a visit.

On the beach between Bognor Regis and Aldwick lies the wreck of a floating pontoon – part of the Mulberry Harbour which was destined to be towed across to Normandy on D-Day. Situated in a delightfully sunny spot on the seafront with extensive lawns and superb views over the English Channel, the Royal Norfolk Hotel is an exceptional Regency building dating from the 1830's. The hotel features a large restaurant, relaxing bar lounge and an entertainment room with dancefloor. The hotel also has an outdoor terrace, where you can soak up the sun, enjoy a drink and watch the world go by.

Additional Information

- ✓ Ground floor rooms available
- ✓ Free hotel car parking available
- ✓ Extensive gardens looking out to the sea
- ✓ Room with a view available
- ✓ Free Wi-Fi throughout
- ✓ Lift serves all floors

Nearby

- ✓ Worthing
- ✓ Brighton
- ✓ Portsmouth
- ✓ Arundel
- ✓ Littlehampton
- ✓ Chichester
- ✓ Isle of Wight

2 Nights (Fri - Sat)	3 Nights (Fri-Sun)	4 Nights (Mon-Thurs)	6 Nights (Sun-Fri)	7 Nights (Sat-Fri) or (Sun-Sat)
Tour 3205SD	Tour 4205SD	Tour 5205SD	Tour 207SD	Tour 205SD
Feb 24 <b>£109</b>	Feb 24 <b>£144</b>	Jan 30 - Feb 27 <b>£174</b>	Mar 5 - Mar 26 <b>£264</b>	Mar 25 - Mar 26 <b>£294</b>
Mar 3 - Mar 24 <b>£119</b>	Mar 3 - Mar 24 <b>£154</b>	Mar 6 - Mar 27 <b>£184</b>	Apr 2 - Apr 16 <b>£284</b>	Apr 1 - Apr 16 <b>£319</b>
Mar 31 - Apr 7 <b>£129</b>	Mar 31 - Apr 7 <b>£174</b>	Apr 3 - Apr 17 <b>£209</b>	Apr 23 - May 14 <b>£319</b>	Apr 22 - May 14 <b>£349</b>
Apr 14 - May 12 <b>£154</b>	Apr 14 - May 12 <b>£199</b>	Apr 24 - May 15 <b>£239</b>	May 21 - Aug 20 <b>£359</b>	May 20 - Aug 20 <b>£404</b>
May 19 - Aug 25 <b>£174</b>	May 19 - Aug 25 <b>£219</b>	May 22 - Aug 21 <b>£274</b>	Aug 27 - Sep 17 <b>£329</b>	Aug 26 - Sep 17 <b>£369</b>
Sep 1 - Sep 15 <b>£154</b>	Sep 1 - Sep 15 <b>£209</b>	Aug 28 - Sep 18 <b>£249</b>	Sep 24 - Oct 15 <b>£304</b>	Sep 23 - Oct 15 <b>£339</b>
Sep 22 - Nov 24 <b>£129</b>	Sep 22 - Nov 24 <b>£174</b>	Sep 25 - Dec 11 <b>£219</b>	Dec 27 (Wed-Tue) <b>£554</b>	Dec 23 <b>£654</b>
Dec 27 (Wed-Fri) <b>£184</b>	Dec 27 (Wed-Sat) <b>£219</b>	Dec 23 (Sat-Wed) <b>£489</b>		
Dec 30 (Sat-Mon) <b>£329</b>	Dec 30 (Sat-Tue) <b>£384</b>			



**Leisureplex**  
HOLIDAY HOTELS

**2 NIGHTS**  
FROM  
**£109**  
PER PERSON

## QUEENS HOTEL

Eastbourne, East Sussex



☎ 01323 722822 ✉ [queens.eastbourne@leisureplex.co.uk](mailto:queens.eastbourne@leisureplex.co.uk)

Marine Parade, Eastbourne, East Sussex, BN21 3DY.

Eastbourne is one of Britain's more elegant resorts, enjoying a glorious location on the South Coast. Sheltered by Beachy Head and the South Downs it has an excellent sunshine record, always coming in the top few of the sunshine league. It has a spacious promenade to stroll along and the world-famous Carpet Gardens line the seafront. Eastbourne has clean inviting beaches predominantly of shingle. There's plenty to see and do with first class shops, cinemas, museums, shows, concerts and dancing in the Winter Gardens.

Beachy Head has panoramic views, from Brighton in the west to Dungeness in Kent in the east. This Area of Outstanding Natural Beauty is close to the historical sites of Hastings and Battle and a short drive from lively Brighton.

A magnificent Victorian building situated in an outstanding position overlooking the pier. Outstanding views of the sea can be found from many of the hotel bedrooms. This grand building has spacious and comfortable restaurant facilities, bar and entertainment room with dancefloor, where entertainment can be found most evenings.

### Additional Information

- ✓ Free hotel car parking available
- ✓ Room with a view available
- ✓ Free Wi-Fi throughout
- ✓ Two lifts serve all floors (although the ground and lower ground floors are split level and some steps are unavoidable)
- ✓ Stair lift available for wheelchair users on ground floor

### Nearby

- ✓ Haver Castle
- ✓ Hastings & Battle
- ✓ Kent & East Sussex Railway
- ✓ Sheffield Park Gardens
- ✓ Leeds Castle
- ✓ Brighton

2 Nights (Fri - Sat)	3 Nights (Fri-Sun)	4 Nights (Mon-Thurs)	6 Nights (Sun-Fri)	7 Nights (Sat-Fri) or (Sun-Sat)
Tour 3215SD	Tour 4215SD	Tour 5215SD	Tour 217SD	Tour 215SD
Feb 24 <b>£109</b>	Feb 24 <b>£144</b>	Jan 30 - Feb 27 <b>£174</b>	Mar 5 - Mar 26 <b>£264</b>	Mar 25 - Mar 26 <b>£294</b>
Mar 3 - Mar 24 <b>£119</b>	Mar 3 - Mar 24 <b>£154</b>	Mar 6 - Mar 27 <b>£184</b>	Apr 2 - Apr 16 <b>£284</b>	Apr 1 - Apr 16 <b>£304</b>
Mar 31 - Apr 7 <b>£129</b>	Mar 31 - Apr 7 <b>£174</b>	Apr 3 - Apr 17 <b>£209</b>	Apr 23 - May 14 <b>£319</b>	Apr 22 - May 14 <b>£359</b>
Apr 14 - May 12 <b>£154</b>	Apr 14 - May 12 <b>£199</b>	Apr 24 - May 15 <b>£239</b>	May 21 - Aug 20 <b>£369</b>	May 20 - Aug 20 <b>£414</b>
May 19 - Aug 25 <b>£174</b>	May 19 - Aug 25 <b>£229</b>	May 22 - Aug 21 <b>£274</b>	Aug 27 - Sep 17 <b>£339</b>	Aug 26 - Sep 17 <b>£369</b>
Sep 1 - Sep 15 <b>£164</b>	Sep 1 - Sep 15 <b>£219</b>	Aug 28 - Sep 18 <b>£264</b>	Sep 24 - Oct 15 <b>£319</b>	Sep 23 - Oct 15 <b>£349</b>
Sep 22 - Oct 27 <b>£144</b>	Sep 22 - Oct 27 <b>£184</b>	Sep 25 - Dec 11 <b>£229</b>	Dec 27 (Wed-Tue) <b>£599</b>	Dec 23 <b>£654</b>
Nov 3 - Nov 24 <b>£154</b>	Nov 3 - Nov 24 <b>£199</b>	Dec 23 (Sat-Wed) <b>£489</b>		
Dec 27 (Wed-Fri) <b>£184</b>	Dec 27 (Wed-Sat) <b>£219</b>			
Dec 30 (Sat-Mon) <b>£349</b>	Dec 30 (Sat-Tue) <b>£394</b>			

# *Explore the* **EAST COAST**

The East of England is home to expansive wetlands, vast sandy beaches and stylish coastal towns. Discover the famous Norfolk Broads, a stunning National Park with over 125 miles of lock free waterways which are home to some of the rarest plants and animals in the UK.

Travel through England's history with a visit to Sandringham House; the much loved country retreat of Her Majesty the Queen and Blickling Estate; a fascinating Jacobean hall and gardens. The East Coast is home to a variety of popular towns, with attraction-packed resorts such as Great Yarmouth and the charming seaside resort of Cromer.

If you've never visited the beautiful East Coast of England before then prepare to be inspired!



## **Great for Walking**

The East Coast boasts a real country feel with its many coastal and forest walks, all set within beautiful rolling landscapes.

**Great Yarmouth** (page 19) – Fill your lungs with fresh air and take a brisk walk along Norfolk's stunning coastal path, with lots of places to begin this walk and many pubs, tearooms and guest houses along the way you can stop off for a well deserved tea break.

**Cromer** (page 20) – If you fancy a scenic stroll why not try the Cromer Lighthouse circular walk where you can see plenty from beaches, woodland and heathland to the lighthouse and golf course.



## **Leisureplex Hotels in this area:**

New Beach Hotel – Great Yarmouth,  
Hotel de Paris – Cromer







**HALF  
PRICE BAR**  
on Spring Breaks  
See page 34



**Leisureplex**  
HOLIDAY HOTELS

**2 NIGHTS**  
FROM  
**£109**  
PER PERSON

## NEW BEACH HOTEL

Great Yarmouth, Norfolk



☎ 01493 332300 ✉ [newbeach.greatyarmouth@leisureplex.co.uk](mailto:newbeach.greatyarmouth@leisureplex.co.uk)  
67 Marine Parade, Great Yarmouth, Norfolk, NR30 2EJ.

Great Yarmouth is East Anglia's top seaside venue, whose long sandy beach stretches for miles, backed by the Marine Parade and promenade, ideal for a stroll or a ride on a horse-drawn landau. Visitors enjoy a huge range of attractions including the Model Village, a magnificent Sea Life Centre and the Hippodrome Circus, one of the longest running permanent circuses in England. Those with an interest in history might also enjoy the Nelson Museum and the preserved Row Houses, unique to Great Yarmouth.

The New Beach Hotel is in a prime position on the seafront opposite Britannia Pier. Many of the hotel bedrooms boast fantastic sea views, where you can enjoy the panoramic views of the resort and seafront. The hotel features a comfortable sun lounge, a large restaurant and entertainment room with dance floor, where you can find entertainment on most evenings.

The Greater Yarmouth area contains wonderful countryside, charming villages, the scenic Breydon Water, and a quieter seaside resort in Gorleston-on-Sea and the vibrant village resort of Hemsby.

### Additional Information

- ✓ Free on street car parking, permit required from the reception
- ✓ Room with a view available
- ✓ Free Wi-Fi throughout
- ✓ Lift serves all floors

### Nearby

- ✓ Norwich
- ✓ Suffolk Villages
- ✓ Norfolk Broads
- ✓ Caister
- ✓ Cromer
- ✓ Lowestoft

#### 2 Nights (Fri - Sat)

Tour 3260SD

Feb 24	<b>£109</b>
Mar 3 - Apr 7	<b>£119</b>
Apr 14 - May 12	<b>£129</b>
May 19 - Aug 25	<b>£164</b>
Sep 1 - Sep 15	<b>£144</b>
Sep 22 - Oct 27	<b>£129</b>
Nov 3 - Nov 24	<b>£144</b>
Dec 27 (Wed-Fri)	<b>£174</b>
Dec 30 (Sat-Mon)	<b>£274</b>

#### 3 Nights (Fri-Sun)

Tour 4260SD

Feb 24 - Mar 24	<b>£144</b>
Mar 31 - Apr 7	<b>£164</b>
Apr 14 - May 12	<b>£174</b>
May 19 - Aug 25	<b>£199</b>
Sep 1 - Sep 15	<b>£184</b>
Sep 22 - Oct 27	<b>£174</b>
Nov 3 - Dec 1	<b>£184</b>
Dec 27 (Wed-Sat)	<b>£209</b>
Dec 30 (Sat-Tue)	<b>£319</b>

#### 4 Nights (Mon-Thurs)

Tour 5260SD

Jan 30 - Feb 27	<b>£164</b>
Mar 6 - Mar 27	<b>£174</b>
Apr 3 - Apr 17	<b>£199</b>
Apr 24 - May 15	<b>£209</b>
May 22 - Aug 21	<b>£239</b>
Aug 28 - Sep 18	<b>£229</b>
Sep 25 - Dec 11	<b>£209</b>
Dec 23 (Sat-Wed)	<b>£479</b>

#### 6 Nights (Sun-Fri)

Tour 262SD

Mar 5 - Mar 26	<b>£239</b>
Apr 2 - Apr 16	<b>£264</b>
Apr 23 - May 14	<b>£284</b>
May 21 - Aug 20	<b>£294</b>
Aug 27 - Oct 15	<b>£284</b>
Dec 27 (Wed-Tue)	<b>£504</b>

#### 7 Nights (Sat-Fri) or (Sun-Sat)

Tour 260SD

Mar 25 - Mar 26	<b>£274</b>
Apr 1 - Apr 16	<b>£284</b>
Apr 22 - May 14	<b>£304</b>
May 20 - Aug 20	<b>£329</b>
Aug 26 - Oct 15	<b>£304</b>
Dec 23	<b>£644</b>



## HOTEL DE PARIS

Cromer, Norfolk



01263 513141 [deparis.cromer@leisureplex.co.uk](mailto:deparis.cromer@leisureplex.co.uk)

High Street, Cromer, Norfolk, NR27 9HG.

**2 NIGHTS**  
FROM  
**£119**  
PER PERSON

Cromer was once a small fishing village which has now grown into a bustling holiday resort, with superb sunshine records. This attractive and small resort is full of character with its narrow twisting streets in the town centre and lively seafront promenade behind the sandy beach. Colourful gardens offer quiet relaxation but if you're feeling energetic there are leisure facilities including bowling greens, tennis courts, squash and golf. The famous Pier Pavilion puts on a unique summer show. Cromer is set amidst the pleasant countryside of North Norfolk with its leafy country lanes and villages with their flint cottages. It is one of the few places in the UK where you can see the

sun rise and set from the same bench. Built in 1820, the Hotel de Paris is a stunning Regency building, occupying the finest position on Cromer seafront and boasting stunning views of the resort and Cromer pier. The hotel is steeped with character and period features and has a warm and welcoming bar and lounge area and restaurant with dancefloor, where you will find entertainment most evenings.

Discover the famous Norfolk Broads, a stunning National Park with over 125 miles of lock free waterways which are home to some of the rarest plants and animals in the UK.

### Additional Information

- ✓ Limited free hotel parking, public car parks available nearby
- ✓ Some ground floor rooms with a couple of steps in the corridor
- ✓ Room with a view available
- ✓ Free Wi-Fi throughout
- ✓ Lift serves all floors

### Nearby

- ✓ Great Yarmouth
- ✓ Bure Valley Railway
- ✓ Blickling Hall
- ✓ Thursford Collection
- ✓ Sheringham
- ✓ Norwich

2 Nights (Fri - Sat)	3 Nights (Fri-Sun)	4 Nights (Mon-Thurs)	6 Nights (Sun-Fri)	7 Nights (Sat-Fri) or (Sun-Sat)
Tour 3265SD	Tour 4265SD	Tour 5265SD	Tour 267SD	Tour 265SD
Feb 24 <b>£119</b>	Feb 24 <b>£144</b>	Jan 30 - Feb 27 <b>£174</b>	Mar 5 - Mar 26 <b>£274</b>	Mar 25 - Mar 26 <b>£304</b>
Mar 3 - Mar 24 <b>£129</b>	Mar 3 - Mar 24 <b>£164</b>	Mar 6 - Mar 27 <b>£199</b>	Apr 2 - Apr 16 <b>£284</b>	Apr 1 - Apr 16 <b>£319</b>
Mar 31 - May 12 <b>£144</b>	Mar 31 - Apr 7 <b>£174</b>	Apr 3 - Apr 17 <b>£209</b>	Apr 23 - May 14 <b>£319</b>	Apr 22 - May 14 <b>£359</b>
May 19 - Aug 25 <b>£174</b>	Apr 14 - May 12 <b>£199</b>	Apr 24 - May 15 <b>£229</b>	May 21 - Aug 20 <b>£349</b>	May 20 - Aug 20 <b>£394</b>
Sep 1 - Sep 15 <b>£154</b>	May 19 - Aug 25 <b>£219</b>	May 22 - Aug 21 <b>£264</b>	Aug 27 - Sep 17 <b>£319</b>	Aug 26 - Sep 17 <b>£359</b>
Sep 22 - Oct 27 <b>£129</b>	Sep 1 - Sep 15 <b>£209</b>	Aug 28 - Sep 18 <b>£249</b>	Sep 24 - Oct 15 <b>£304</b>	Sep 23 - Oct 15 <b>£339</b>
Nov 3 - Nov 24 <b>£154</b>	Sep 22 - Oct 27 <b>£174</b>	Sep 25 - Oct 23 <b>£219</b>	Dec 27 (Wed-Tue) <b>£544</b>	Dec 23 <b>£634</b>
Dec 27 (Wed-Fri) <b>£174</b>	Nov 3 - Nov 24 <b>£184</b>	Oct 30 - Dec 11 <b>£229</b>		
Dec 30 (Sat-Mon) <b>£304</b>	Dec 27 (Wed-Sat) <b>£209</b>	Dec 23 (Sat-Wed) <b>£469</b>		
	Dec 30 (Sat-Tue) <b>£359</b>			

# Explore YORKSHIRE

Yorkshire is where England's true beauty shines, from historical attractions, World Heritage Sites and stunning countryside, to those that know this region there is a wealth of beauty unspoilt by large numbers of visitors.

Let's not forget the maritime history of Scarborough and Whitby, which have been the heart of these towns for centuries. The real beauty of Yorkshire is its secret and it's there waiting to be discovered.



## Great for Theatre

**Scarborough** (page 22) – Scarborough entertainment comes in many different forms. From the tantalising plays at the Stephen Joseph Theatre to the fantastic summer shows at the Open Air Theatre, you really can make your holiday one to remember.

**Bridlington** (page 23) – Bridlington Spa hosts the best dance, comedy and music performances. As a magnet for world class talent, Bridlington Spa always features an exciting entertainment programme.



## Leisureplex Hotels in this area:

Cumberland Hotel – Scarborough,  
Monarch Hotel – Bridlington





## CUMBERLAND HOTEL

Scarborough, North Yorkshire



01723 361826 [cumberland.scarborough@leisureplex.co.uk](mailto:cumberland.scarborough@leisureplex.co.uk)

Belmont Road, Scarborough, North Yorkshire, YO11 2AB.

2 NIGHTS  
FROM  
**£109**  
PER PERSON

Holidaymakers have been visiting Scarborough for hundreds of years. As Britain's first seaside resort, a holiday to Scarborough offers something for everyone with sandy beaches, stunning views and many attractions. Scarborough's headline which divides its two bays reveals an impressive medieval castle with Viking heritage and Roman remains in the grounds. The harbour is home to many fishing boats and on the South bay promenade you will find many traditional seaside pursuits. Why not visit Peaseholm park with its Japanese gardens and boating lake, or take a trip on one of the many local boats, from

which you can enjoy panoramic views of the resort, or enjoy entertainment at the famous open air theatre. Situated on south Cliff and boasting a fantastic view over the resort from the restaurant and many of the bedrooms. The hotel features a large modern restaurant, a cosy quiet lounge and a large entertainment room with dancefloor, where entertainment can be found most evenings. Just a short drive away you will find the historic and vibrant Roman city of York. The whaling port of Whitby and the North Yorkshire Moors Railway.

### Additional Information

- ✓ Free on street parking, permit required from the reception
- ✓ Room with a view available
- ✓ Free Wi-Fi throughout
- ✓ Lift servicing all floors (few steps to some rooms)

### Nearby

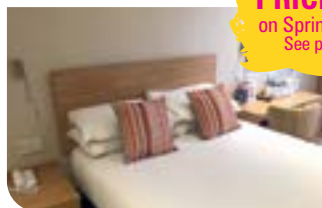
- ✓ Whitby
- ✓ York
- ✓ Beverley
- ✓ Bridlington
- ✓ Castle Howard

2 Nights (Fri - Sat)	3 Nights (Fri-Sun)	4 Nights (Mon-Thurs)	6 Nights (Sun-Fri)	7 Nights (Sat-Fri) or (Sun-Sat)
Tour 3276SD	Tour 4275SD	Tour 5275SD	Tour 277SD	Tour 275SD
Feb 24 <b>£109</b>	Feb 24 <b>£144</b>	Jan 30 - Feb 27 <b>£174</b>	Mar 5 - Mar 26 <b>£264</b>	Mar 25 - Mar 26 <b>£294</b>
Mar 3 - Mar 24 <b>£119</b>	Mar 3 - Mar 24 <b>£154</b>	Mar 6 - Mar 27 <b>£184</b>	Apr 2 - Apr 16 <b>£274</b>	Apr 1 - Apr 16 <b>£304</b>
Mar 31 - Apr 7 <b>£129</b>	Mar 31 - Apr 7 <b>£174</b>	Apr 3 - Apr 17 <b>£209</b>	Apr 23 - May 14 <b>£319</b>	Apr 22 - May 14 <b>£359</b>
Apr 14 - May 12 <b>£144</b>	Apr 14 - May 12 <b>£184</b>	Apr 24 - May 15 <b>£229</b>	May 21 - Aug 20 <b>£349</b>	May 20 - Aug 20 <b>£394</b>
May 19 - Aug 25 <b>£174</b>	May 19 - Aug 25 <b>£219</b>	May 22 - Aug 21 <b>£264</b>	Aug 27 - Sep 17 <b>£319</b>	Aug 26 - Sep 17 <b>£359</b>
Sep 1 - Sep 15 <b>£154</b>	Sep 1 - Sep 15 <b>£209</b>	Aug 28 - Sep 18 <b>£249</b>	Sep 24 - Oct 15 <b>£294</b>	Sep 23 - Oct 15 <b>£329</b>
Sep 22 - Oct 27 <b>£129</b>	Sep 22 - Oct 27 <b>£174</b>	Sep 25 - Oct 23 <b>£219</b>	Dec 27 (Wed-Tue) <b>£579</b>	Dec 23 <b>£654</b>
Nov 3 - Nov 24 <b>£144</b>	Nov 3 - Dec 1 <b>£184</b>	Oct 30 - Dec 11 <b>£229</b>		
Dec 27 (Wed-Fri) <b>£184</b>	Dec 27 (Wed-Sat) <b>£219</b>	Dec 23 (Sat-Wed) <b>£504</b>		
Dec 30 (Sat-Mon) <b>£329</b>	Dec 30 (Sat-Tue) <b>£384</b>			





**HALF  
PRICE BAR**  
on Spring Breaks  
See page 34



**Leisureplex**  
HOLIDAY HOTELS

## MONARCH HOTEL

Bridlington, Yorkshire



☎ 01262 674447 📧 monarch.bridlington@leisureplex.co.uk

South Marine Drive, Bridlington, North East, YO15 3JJ

**2 NIGHTS  
FROM  
£109  
PER PERSON**

Bridlington has an historic old town, long promenade, sandy beach and cliff top walks with views of the trawler port. Bridlington Old Town is traditional Yorkshire in a nutshell. Packed with attractive antique shops and restaurants, the old Town was the setting for 2016's Dad's Army film. The delightful mix of brick and stone buildings, colourful shop fronts, popular cafes and individual shops provide a relaxing environment for shopping or strolling. Entertainments and art galleries are housed in the refurbished Spa Centre on the seafront.

The Monarch Hotel offers breath-taking panoramic sea views and is

sure to provide the perfect base for exploring Bridlington and surrounding areas. The hotel features a quiet lounge, restaurant and bar area on the first floor, as well as a good size dance floor where entertainment is regularly featured. The hotel has undergone a million pound refurbishment since joining the Group in 2019.

Sewerby Hall, set in 50 acres of early 19th Century parkland, is uniquely situated in a dramatic cliff top position with spectacular views. Just 2 miles from Bridlington, it is a must see whilst in the area.

### Additional Information

- ✓ Free on street car parking
- ✓ Room with a view available
- ✓ Free Wi-Fi throughout
- ✓ Lift serves all floors except the 6th

### Nearby

- ✓ Flamborough Head
- ✓ Scarborough
- ✓ York
- ✓ Castle Howard
- ✓ Beverley

2 Nights (Fri - Sat)	3 Nights (Fri-Sun)	4 Nights (Mon-Thurs)	6 Nights (Sun-Fri)	7 Nights (Sat-Fri) or (Sun-Sat)
Tour 3279SD	Tour 4279SD	Tour 5279SD	Tour 280SD	Tour 279SD
Feb 24 <b>£109</b>	Feb 24 <b>£144</b>	Jan 30 - Feb 27 <b>£174</b>	Mar 5 - Mar 26 <b>£264</b>	Mar 25 - Mar 26 <b>£294</b>
Mar 3 - Mar 24 <b>£119</b>	Mar 3 - Mar 24 <b>£154</b>	Mar 6 - Mar 27 <b>£184</b>	Apr 2 - Apr 16 <b>£274</b>	Apr 1 - Apr 16 <b>£304</b>
Mar 31 - Apr 7 <b>£129</b>	Mar 31 - Apr 7 <b>£174</b>	Apr 3 - Apr 17 <b>£209</b>	Apr 23 - May 14 <b>£319</b>	Apr 22 - May 14 <b>£359</b>
Apr 14 - May 12 <b>£144</b>	Apr 14 - May 12 <b>£184</b>	Apr 24 - May 15 <b>£229</b>	May 21 - Aug 20 <b>£349</b>	May 20 - Aug 20 <b>£394</b>
May 19 - Aug 25 <b>£174</b>	May 19 - Aug 25 <b>£219</b>	May 22 - Aug 21 <b>£264</b>	Aug 27 - Sep 17 <b>£319</b>	Aug 26 - Sep 17 <b>£359</b>
Sep 1 - Sep 15 <b>£154</b>	Sep 1 - Sep 15 <b>£209</b>	Aug 28 - Sep 18 <b>£249</b>	Sep 24 - Oct 15 <b>£304</b>	Sep 23 - Oct 15 <b>£329</b>
Sep 22 - Oct 27 <b>£129</b>	Sep 22 - Oct 27 <b>£174</b>	Sep 25 - Dec 11 <b>£219</b>	Dec 27 (Wed-Tue) <b>£544</b>	Dec 23 <b>£634</b>
Nov 3 - Nov 24 <b>£154</b>	Nov 3 - Nov 24 <b>£184</b>	Dec 23 (Sat-Wed) <b>£469</b>		
Dec 27 (Wed-Fri) <b>£174</b>	Dec 27 (Wed-Sat) <b>£209</b>			
Dec 30 (Sat-Mon) <b>£319</b>	Dec 30 (Sat-Tue) <b>£359</b>			



# *Explore the* **NORTH WEST**

There are so many enchanting places to visit in the North West, with its idyllic countryside, iconic seaside resorts and historic towns; this is one of the most exciting corners of the country. Experience the revolutionary cities of Manchester and Liverpool, with their impressive musical legacies, art galleries and theatres, together with magnificent buildings.

A visit to the ancient city of Chester is a breathtaking experience, with the most complete city walls, the oldest racecourse, 1000 year old cathedral and the largest Roman Amphitheatre in Britain. Just along the coast from these major cities you will find a string of vibrant seaside resorts such as Blackpool, Morecambe, Southport and Lytham St Annes.

The serenity of the Lake District, with its stunning scenery and varied landscapes provides the perfect escape from the hustle and bustle. There is something to charm everyone in the North West.



## **Great for Theatre**

The North West is home to an exciting plethora of theatre entertainments, with venues such as the Liverpool Playhouse, Manchester Palace Theatre and none other than the famous Blackpool Winter Gardens, you can fill your holiday with a range of live shows, musicals and performances.

**Blackpool** (page 25) - Blackpool is home to the world-famous Winter Gardens, one of Europe's biggest entertainment complexes. You will never be stuck for choice with the amazing range of theatre, musicals, comedy shows and concerts on show here. This stunning 1800's venue is the ideal place to make the most of your time in the resort.



## **Leisureplex Hotels in this area:**

Queens Hotel - Blackpool



Blackpool



**HALF  
PRICE BAR**  
on Spring Breaks  
See page 34



**Leisureplex**  
HOLIDAY HOTELS

## QUEENS HOTEL

Blackpool, Lancashire



☎ 01253 336980 📧 [queens.blackpool@leisureplex.co.uk](mailto:queens.blackpool@leisureplex.co.uk)

South Promenade, Blackpool, Lancashire, FY4 1AY.

**2 NIGHTS  
FROM  
£109  
PER PERSON**

Few resorts anywhere in the world can rival the popularity of Blackpool – Britain's Capital of Fun!

The world famous Tower, three piers, miles of golden sands, the spectacular Pleasure Beach with its breathtaking "white knuckle" rides, horse drawn carriages, a Sealife Centre, Madame Tussaud's Waxworks, a Zoo Park, an Art Gallery – Blackpool has them all. Make sure to save some of your energy for the evening and sample the terrific summer shows, lively bars and pubs, for it is at night that Blackpool really stands out as the most exciting of all Britain's resorts.

With fantastic views of the Irish Sea, the Queens Hotel is located between Blackpool's south and central piers. The hotel features a modern restaurant, bar, lounge and a sun lounge. Immerse yourself in Blackpool's theatrical history, in the hotel's unique Theatre Bar, featuring a dancefloor and entertainment on most evenings.

For a complete contrast to the sheer energy of Blackpool, just a short drive away is some of the most serene scenery in Britain including the Ribble Valley and the Lake District.

### Additional Information

- ✓ Free hotel car parking available
- ✓ Room with a view available
- ✓ Free Wi-Fi throughout
- ✓ 2 lifts serve all floors (although several steps to some rooms)

### Nearby

- ✓ Ribble Valley & Pendle Witch Country
- ✓ Fleetwood
- ✓ Lytham St. Annes
- ✓ Southport
- ✓ Trough of Bowland
- ✓ Yorkshire Dales
- ✓ Lake District
- ✓ Manchester
- ✓ Liverpool
- ✓ Lancaster

2 Nights (Fri - Sat)	3 Nights (Fri-Sun)	4 Nights (Mon-Thurs)	6 Nights (Sun-Fri)	7 Nights (Sat-Fri) or (Sun-Sat)
Tour 3305SD	Tour 4305SD	Tour 5305SD	Tour 307SD	Tour 305SD
Feb 24 <b>£109</b>	Feb 24 <b>£144</b>	Jan 30 - Feb 27 <b>£164</b>	Mar 5 - Mar 26 <b>£249</b>	Mar 25 - Mar 26 <b>£284</b>
Mar 3 - Mar 24 <b>£119</b>	Mar 3 - Mar 24 <b>£154</b>	Mar 6 - Mar 27 <b>£184</b>	Apr 2 - Apr 16 <b>£274</b>	Apr 1 - Apr 16 <b>£294</b>
Mar 31 - Apr 7 <b>£129</b>	Mar 31 - Apr 7 <b>£164</b>	Apr 3 - Apr 17 <b>£199</b>	Apr 23 - May 14 <b>£294</b>	Apr 22 - May 14 <b>£339</b>
Apr 14 - May 12 <b>£144</b>	Apr 14 - May 12 <b>£184</b>	Apr 24 - May 15 <b>£229</b>	May 21 - Oct 15 <b>£339</b>	May 20 - Oct 15 <b>£369</b>
May 19 - Aug 25 <b>£164</b>	May 19 - Oct 27 <b>£209</b>	May 22 - Oct 23 <b>£249</b>	Dec 27 (Wed-Tue) <b>£599</b>	Dec 23 <b>£674</b>
Sep 1 - Nov 24 <b>£154</b>	Nov 3 - Nov 24 <b>£199</b>	Oct 30 - Dec 11 <b>£209</b>		
Dec 27 (Wed-Fri) <b>£184</b>	Dec 27 (Wed-Sat) <b>£219</b>	Dec 23 (Sat-Wed) <b>£514</b>		
Dec 30 (Sat-Mon) <b>£349</b>	Dec 30 (Sat-Tue) <b>£394</b>			

# Explore WALES

A colourful myriad of rugged coastline, mountainous national parks and Celtic culture, Wales has everything you could wish for in a holiday. The phrase 'good things come in small packages' may be a cliché, but in the case of Wales it's absolutely true.



## Great for Walking

Take a walk in Wales and you'll find superb scenery is the constant whether you're by the coast, walking through the mountains, valleys or hills. Take a look below for some of our favourite places to walk in Wales.

**Criccieth** (page 28) – minutes from the railway station which acts as a gateway to a myriad of stunning coastline and mountainous walks. On the door step outside our hotel is a beautiful coastal walk from Criccieth to Porthmadog and the Criccieth Castle circular walk.

**Porthcawl** (page 29) – join the Wales Coastal Path from Porthcawl to Southerndown Beach, explore Bryngarw Country Park, Margam Country Park and Parc Slip Nature Reserve.

**Tenby** (page 30) – national geographic magazine rated the Pembrokeshire Coast as the second best in the World with over 186 miles of varied coastline. Walks include Saundersfoot to Tenby, Tenby Circular or Waterwynch & North Beach.



## Great for Theatre

**Llandudno** (page 27) – The packed live programme at Venue Cymru includes drama, musicals, dance, stand-up comedy, live music, children's shows, talks and festivals so there really is something for everyone. Situated just a 3 minute walk from our hotel, it's perfect to incorporate a visit into your stay.



## Leisureplex Hotels in this area:

Hydro Hotel – Llandudno,  
George IV Hotel – Criccieth,  
Seabank Hotel – Porthcawl,  
Cliffe Norton Hotel – Tenby



**Leisureplex**  
HOLIDAY HOTELS

**2 NIGHTS**  
FROM  
**£119**  
PER PERSON

## HYDRO HOTEL

Llandudno, Gwynedd



☎ 01492 870101    ✉ [hydro.llandudno@leisureplex.co.uk](mailto:hydro.llandudno@leisureplex.co.uk)  
Neville Crescent, Llandudno, Gwynedd, LL30 1AS.

Lying on a peninsula between the Great Orme and Little Orme Heads, Llandudno has two great beaches. The shingly North Shore is the busier of the two with its Victorian Pier, boat trips, donkey rides and much more. The sandy West shore is quieter with miles of sands and panoramic views of the Snowdonia mountain range in the distance. A Victorian tramway and cable car offer a route to the summit of the Great Orme. There is plenty to do both day and night and you are sure never to have a dull moment at what many would claim to be the most complete of all British holiday resorts.

Situated on the Llandudno promenade, this grand hotel features a magnificent sun lounge, with spectacular view over the bay, a magnificent restaurant, games room and large entertainment room with dancefloor, where you will find entertainment most evenings. Many of the hotel's rooms have spectacular views of the bay or over the town to the Welsh mountains.

Just a 15 minute drive away is the nearby town of Conwy where you will find stunning scenery, the smallest house in Britain, the Bodnant gardens, Conwy Mountain and of course the iconic Conwy Castle and Walls.

### Additional Information

- ✓ Some ground floor rooms
- ✓ Free hotel car parking available
- ✓ Room with a view available
- ✓ Free Wi-Fi throughout
- ✓ Lift serves all floors  
(split level floors means some steps to most rooms)

### Nearby

- ✓ Llangollen
- ✓ Betws-y-Coed
- ✓ Anglesey
- ✓ Conwy Castle
- ✓ Caernarfon
- ✓ Bangor

#### 2 Nights (Fri - Sat)

Tour 3350SD

Feb 24	<b>£119</b>
Mar 3 - Mar 24	<b>£129</b>
Mar 31 - Apr 7	<b>£144</b>
Apr 14 - May 12	<b>£154</b>
May 19 - Aug 25	<b>£174</b>
Sep 1 - Sep 15	<b>£154</b>
Sep 22 - Nov 24	<b>£144</b>
Dec 27 (Wed-Fri)	<b>£184</b>
Dec 30 (Sat-Mon)	<b>£349</b>

#### 3 Nights (Fri-Sun)

Tour 3350SD

Feb 24	<b>£144</b>
Mar 3 - Mar 24	<b>£154</b>
Mar 31 - Apr 7	<b>£174</b>
Apr 14 - May 12	<b>£199</b>
May 19 - Aug 25	<b>£219</b>
Sep 1 - Sep 15	<b>£209</b>
Sep 22 - Dec 1	<b>£184</b>
Dec 27 (Wed-Sat)	<b>£219</b>
Dec 30 (Sat-Tue)	<b>£394</b>

#### 4 Nights (Mon-Thurs)

Tour 5350SD

Jan 30 - Feb 27	<b>£174</b>
Mar 6 - Mar 27	<b>£184</b>
Apr 3 - Apr 17	<b>£209</b>
Apr 24 - May 15	<b>£239</b>
May 22 - Aug 21	<b>£274</b>
Aug 28 - Sep 18	<b>£249</b>
Sep 25 - Dec 11	<b>£229</b>
Dec 23 (Sat-Wed)	<b>£514</b>

#### 6 Nights (Sun-Fri)

Tour 352SD

Mar 5 - Mar 26	<b>£264</b>
Apr 2 - Apr 16	<b>£284</b>
Apr 23 - May 14	<b>£319</b>
May 21 - Aug 20	<b>£349</b>
Aug 27 - Sep 17	<b>£319</b>
Sep 24 - Oct 15	<b>£304</b>
Dec 27 (Wed-Tue)	<b>£599</b>

#### 7 Nights (Sat-Fri) or (Sun-Sat)

Tour 350SD

Mar 25 - Mar 26	<b>£294</b>
Apr 1 - Apr 16	<b>£319</b>
Apr 22 - May 14	<b>£349</b>
May 20 - Aug 20	<b>£394</b>
Aug 26 - Sep 17	<b>£349</b>
Sep 23 - Oct 15	<b>£329</b>
Dec 23	<b>£674</b>



GEORGE IV HOTEL

Criccieth, Gwynedd



01766 522168    georgeiv.criccieth@leisureplex.co.uk  
21-25 High Street, Criccieth, Gwynedd, LL52 OBS.

2 NIGHTS  
FROM  
**£109**  
PER PERSON

Criccieth lies on the south coast of the Llyn Peninsula with splendid views over Cardigan Bay. The medieval castle dominates the town. The castle headland divides the seafront into two with a pebbly bay to the west and a sheltered mainly sandy bay to the east. This area of Wales is ideal for walking, from the gentle rolling hills of the Llyn Peninsula in the west to the soaring majesty of Snowdonia in the east with delightful gardens and castles at every turn. Nearby is the village of Llanystumdwy, which boasts a museum devoted to David Lloyd George. Criccieth railway station provides a great way

to visit Porthmadog or Pwllheli on the Cambrian line as well as giving an easy route to explore the world of the famous Ffestiniog and the Welsh Highland Railway.

A delightful and unique hotel, situated on Criccieth's High Street. From many of the hotel bedrooms, you can enjoy magnificent views over Cardigan Bay and Criccieth Castle or over to the Welsh mountains. The hotel is just a short stroll away from the beach, resorts shops and rocky headland. The hotel features a lounge bar, restaurant, quiet lounge and entertainment room with dancefloor, where entertainment can be found most evenings.

Additional Information

- ✓ Room with a view available
- ✓ Free Wi-Fi throughout
- ✓ Lift serves all floors (few steps to most rooms)

Nearby

- ✓ Snowdonia National Park
- ✓ Portmeirion Village
- ✓ Harlech
- ✓ Porthmadog
- ✓ Dolgellau
- ✓ Llechwedd Slate Caverns

2 Nights (Fri - Sat)	3 Nights (Fri-Sun)	4 Nights (Mon-Thurs)	6 Nights (Sun-Fri)	7 Nights (Sat-Fri) or (Sun-Sat)
Tour 3365SD	Tour 4365SD	Tour 5365SD	Tour 367SD	Tour 365SD
Feb 24 <b>£109</b>	Feb 24 <b>£144</b>	Jan 30 - Feb 27 <b>£174</b>	Mar 5 - Mar 26 <b>£264</b>	Mar 25 - Mar 26 <b>£294</b>
Mar 3 - Mar 24 <b>£119</b>	Mar 3 - Mar 24 <b>£154</b>	Mar 6 - Mar 27 <b>£184</b>	Apr 2 - Apr 16 <b>£284</b>	Apr 1 - Apr 16 <b>£319</b>
Mar 31 - Apr 7 <b>£129</b>	Mar 31 - Apr 7 <b>£174</b>	Apr 3 - Apr 17 <b>£209</b>	Apr 23 - May 14 <b>£319</b>	Apr 22 - May 14 <b>£349</b>
Apr 14 - May 12 <b>£144</b>	Apr 14 - May 12 <b>£184</b>	Apr 24 - May 15 <b>£229</b>	May 21 - Aug 20 <b>£339</b>	May 20 - Aug 20 <b>£384</b>
May 19 - Aug 25 <b>£164</b>	May 19 - Aug 25 <b>£209</b>	May 22 - Aug 21 <b>£264</b>	Aug 27 - Oct 15 <b>£304</b>	Aug 26 - Sep 17 <b>£349</b>
Sep 1 - Sep 15 <b>£144</b>	Sep 1 - Sep 15 <b>£199</b>	Aug 28 - Sep 18 <b>£239</b>	Dec 27 (Wed-Tue) <b>£569</b>	Sep 23 - Oct 15 <b>£329</b>
Sep 22 - Oct 27 <b>£129</b>	Sep 22 - Oct 27 <b>£174</b>	Sep 25 - Dec 11 <b>£219</b>		Dec 23 <b>£654</b>
Nov 3 - Nov 24 <b>£144</b>	Nov 3 - Nov 24 <b>£184</b>	Dec 23 (Sat-Wed) <b>£479</b>		
Dec 27 (Wed-Fri) <b>£184</b>	Dec 27 (Wed-Sat) <b>£219</b>			
Dec 30 (Sat-Mon) <b>£329</b>	Dec 30 (Sat-Tue) <b>£384</b>			





**HALF  
PRICE BAR**  
on Spring Breaks  
See page 34



**Leisureplex**  
HOLIDAY HOTELS

**2 NIGHTS  
FROM  
£109  
PER PERSON**

## SEABANK HOTEL

Porthcawl, Glamorgan



☎ 01656 782261 ✉ seabank.porthcawl@leisureplex.co.uk  
Esplanade, Porthcawl, Glamorgan, CF36 3LU.

Located between Swansea and Cardiff, Porthcawl was originally a port for the iron and steel industries and is still home to the oldest maritime warehouse in Wales and an attractive harbour. It developed as a resort after the Great War and the splendid Grand Pavilion dates from 1932. It is famous for its many golf courses including the world famous Royal Porthcawl. Coney Beach is a fairground with a variety of rides and amusements which was named after the famous New York venue. Porthcawl has several beaches and some lovely countryside walks.

Porthcawl's most iconic building, situated on the headland with fantastic sea views across the resort. There are spectacular panoramic views of the Bristol Channel and coast from the bar and many bedrooms. The hotel features a large modern restaurant, quiet lounge and Bar, with dancefloor, where you will find entertainment most evenings.

To the East of Porthcawl lies the River Ogmore and the beautiful Glamorgan Heritage Coast – 14 miles of unspoilt coastline and breathtaking scenery.

### Additional Information

- ✓ Free hotel car parking available
- ✓ Ground floor rooms available
- ✓ Room with a view available
- ✓ Free Wi-Fi throughout
- ✓ Lift serves most rooms (few steps to some rooms)

### Nearby

- ✓ Tenby
- ✓ Cardiff
- ✓ Barry Island
- ✓ St. Fagan's
- ✓ National History Museum
- ✓ Swansea
- ✓ Laugharne
- ✓ Brecon Beacons

#### 2 Nights (Fri - Sat)

Tour 3385SD

Feb 24	<b>£109</b>
Mar 3 - Mar 24	<b>£119</b>
Mar 31 - Apr 7	<b>£129</b>
Apr 14 - May 12	<b>£144</b>
May 19 - Aug 25	<b>£164</b>
Sep 1 - Sep 15	<b>£144</b>
Sep 22 - Nov 24	<b>£129</b>
Dec 27 (Wed-Fri)	<b>£184</b>
Dec 30 (Sat-Mon)	<b>£329</b>

#### 3 Nights (Fri-Sun)

Tour 4385SD

Feb 24	<b>£144</b>
Mar 3 - Mar 24	<b>£154</b>
Mar 31 - Apr 7	<b>£174</b>
Apr 14 - May 12	<b>£184</b>
May 19 - Aug 25	<b>£209</b>
Sep 1 - Sep 22	<b>£199</b>
Sep 29 - Nov 24	<b>£174</b>
Dec 27 (Wed-Sat)	<b>£219</b>
Dec 30 (Sat-Tue)	<b>£384</b>

#### 4 Nights (Mon-Thurs)

Tour 5385SD

Jan 30 - Feb 27	<b>£174</b>
Mar 6 - Mar 27	<b>£184</b>
Apr 3 - Apr 17	<b>£209</b>
Apr 24 - May 15	<b>£229</b>
May 22 - Aug 21	<b>£264</b>
Aug 28 - Sep 18	<b>£239</b>
Sep 25 - Oct 23	<b>£209</b>
Oct 30 - Dec 11	<b>£219</b>
Dec 23 (Sat-Wed)	<b>£479</b>

#### 6 Nights (Sun-Fri)

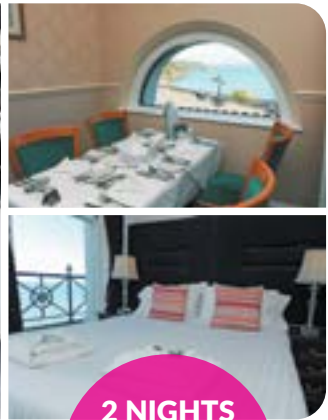
Tour 387SD

Mar 5 - Mar 26	<b>£264</b>
Apr 2 - Apr 16	<b>£284</b>
Apr 23 - May 14	<b>£309</b>
May 21 - Aug 20	<b>£339</b>
Aug 27 - Sep 17	<b>£304</b>
Sep 24 - Oct 15	<b>£294</b>
Dec 27 (Wed-Tue)	<b>£579</b>

#### 7 Nights (Sat-Fri) or (Sun-Sat)

Tour 385SD

Mar 25 - Mar 26	<b>£294</b>
Apr 1 - Apr 16	<b>£304</b>
Apr 22 - May 14	<b>£349</b>
May 20 - Aug 20	<b>£369</b>
Aug 26 - Sep 17	<b>£349</b>
Sep 23 - Oct 15	<b>£319</b>
Dec 23	<b>£654</b>



## CLIFFE NORTON HOTEL

Tenby, Pembrokeshire



☎ 01834 842333    ✉ [cliffe.norton@leisureplex.co.uk](mailto:cliffe.norton@leisureplex.co.uk)  
The Norton, Tenby, South Pembrokeshire, SA70 8AA.

**2 NIGHTS**  
FROM  
**£119**  
PER PERSON

Tenby is a uniquely attractive resort. Its pastel coloured buildings, narrow streets, fortified walls and the quality of the light from its shimmering bays give it an atmosphere which is reminiscent of the Mediterranean. Its medieval castle was bombarded into submission by Cromwell using artillery on both land and sea and the feeling of a town whose history is much richer than most seaside resorts is very strong as one ambles around the narrow streets or stops for a drink in one of the many bars or cafes. The fifteenth century Tudor Merchants House gives an insight into life when it was a busy trading port.

Tenby has four magnificent sandy beaches and a delightful harbour which is always busy with pleasure craft and the regular ferries which serve the nearby Caldey Island monastery, a "must" to explore during your stay.

Occupying a prime position on the North Beach, in the stunning resort of Tenby, the hotel boasts spectacular views across the bay from many of the hotel's bedrooms and restaurant and is just a short stroll away from the resorts town centre. The hotel features a restaurant, quiet lounge and bar with dancefloor, where you will find entertainment most evenings.

### Additional Information

- ✓ Local car parking is available
- ✓ The restaurant is on a split level from the reception and is accessible via the stairs or a lift
- ✓ Sea view rooms available
- ✓ Free Wi-Fi throughout
- ✓ Lift serves all floors

### Nearby

- ✓ Haverfordwest
- ✓ St. David's
- ✓ Laugharne
- ✓ Carmarthen
- ✓ Pembroke
- ✓ Narberth

2 Nights (Fri - Sat)	3 Nights (Fri-Sun)	4 Nights (Mon-Thurs)	6 Nights (Sun-Fri)	7 Nights (Sat-Fri) or (Sun-Sat)
Tour 3380SD	Tour 4380SD	Tour 5380SD	Tour 382SD	Tour 380SD
Feb 24 <b>£119</b>	Feb 24 <b>£154</b>	Jan 30 - Feb 27 <b>£184</b>	Mar 5 - Mar 26 <b>£274</b>	Mar 25 - Mar 26 <b>£304</b>
Mar 3 - Mar 24 <b>£129</b>	Mar 3 - Mar 24 <b>£174</b>	Mar 6 - Mar 27 <b>£209</b>	Apr 2 - Apr 16 <b>£304</b>	Apr 1 - Apr 16 <b>£339</b>
Mar 31 - Apr 7 <b>£144</b>	Mar 31 - Apr 7 <b>£184</b>	Apr 3 - Apr 17 <b>£219</b>	Apr 23 - May 14 <b>£349</b>	Apr 22 - May 14 <b>£369</b>
Apr 14 - May 12 <b>£154</b>	Apr 14 - May 12 <b>£209</b>	Apr 24 - May 15 <b>£249</b>	May 21 - Aug 20 <b>£369</b>	May 20 - Aug 20 <b>£414</b>
May 19 - Aug 25 <b>£174</b>	May 19 - Aug 25 <b>£229</b>	May 22 - Aug 21 <b>£284</b>	Aug 27 - Sep 17 <b>£339</b>	Aug 26 - Sep 17 <b>£384</b>
Sep 1 - Sep 15 <b>£154</b>	Sep 1 - Sep 15 <b>£209</b>	Aug 28 - Sep 18 <b>£264</b>	Sep 24 - Oct 15 <b>£329</b>	Sep 23 - Oct 15 <b>£359</b>
Sep 22 - Oct 27 <b>£144</b>	Sep 22 - Oct 27 <b>£184</b>	Sep 25 - Oct 23 <b>£229</b>	Dec 27 <b>£599</b>	Dec 23 <b>£674</b>
Nov 3 - Nov 24 <b>£154</b>	Nov 3 - Nov 24 <b>£199</b>	Oct 30 - Dec 11 <b>£239</b>		
Dec 27 (Wed-Fri) <b>£199</b>	Dec 27 (Wed-Sat) <b>£229</b>	Dec 23 (Sat-Wed) <b>£504</b>		
Dec 30 (Sat-Mon) <b>£359</b>	Dec 30 (Sat-Tue) <b>£404</b>			

# Explore SCOTLAND

A land of magical glens and picturesque lochs with stunning mountain views, when it comes to exploring Scotland, it's as much about the journey as the destination.

From the shimmering waters of Loch Lomond, to the unspoilt natural beauty of the highlands and everything in between, a holiday to Scotland is sure to leave you with memories to last a lifetime.



## Great for Walking

Discover Scotland one step at a time, and uncover some outstanding scenery. We've highlighted some of our favourite walks below which are near to our hotels for you to explore.

**Dunoon** (page 32) – There is a wide range of walking, from the short but spectacular Puck's Glen to the Loch Lomond and Cowal Way, a 90km multi-day route traversing the area from Portavadie to Inveruglas on Loch Lomond.

**Fort William** (page 33) – discover Ben Nevis, ascend the highest mountain in Britain, Inchree Falls or Dun Deardail Forest.



## Leisureplex Hotels in this area:

Selborne Hotel – Dunoon,  
Croit Anna Hotel – Fort William



Fort William



SELBORNE HOTEL

Argyll, Dunoon



☎ 01369 702761    📧 selborne.dunoon@leisureplex.co.uk  
Clyde Street, Dunoon, Argyll, PA23 7HT.

**HALF PRICE BAR**  
on Spring Breaks  
See page 34

**2 NIGHTS**  
FROM  
**£119**  
PER PERSON

Dunoon is splendidly situated on the western shores of the Firth of Clyde. A traditional seaside resort, Dunoon boasts lovely gardens, the remains of a castle, a four mile promenade and a 19th Century pier with panoramic views across the Clyde. Pleasure cruises run throughout the summer months sailing to destinations ranging from Loch Goil to Largs and Rothesay. You may even catch the last sea-going paddle steamer in the world, the Waverley.

In a superb position on the banks of the Clyde, the hotel boasts spectacular views across the hotel's gardens that

reach down to the promenade and water's edge. All the public rooms and many of the bedrooms offer uninterrupted views of the Clyde. Ground floor areas include a bar lounge with dance floor, quiet lounge and games room. The hotel has an outdoor terrace, where you can enjoy the view. Entertainment is provided most evenings in the bar lounge.

Dunoon is a great base to explore the surrounding attractions of Argyll Forest Park which is home to some of Scotland's most spectacular mountain scenery, and nearby Benmore Botanic Garden.

Additional Information

- ✓ Free hotel car parking available
- ✓ Room with a view available
- ✓ Free Wi-Fi throughout
- ✓ Lift serves most rooms (few steps to some rooms)

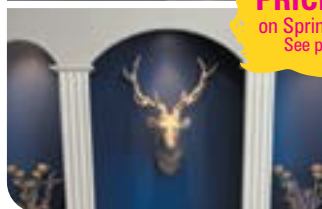
Nearby

- ✓ Inveraray Castle
- ✓ Helensburgh
- ✓ Oban
- ✓ Loch Lomond
- ✓ Rothesay
- ✓ Bute
- ✓ Trossach
- ✓ Glasgow

2 Nights (Fri - Sat)	3 Nights (Fri-Sun)	4 Nights (Mon-Thurs)	6 Nights (Sun-Fri)	7 Nights (Sat-Fri) or (Sun-Sat)
Tour 3410SD	Tour 4410SD	Tour 5410SD	Tour 412SD	Tour 410SD
Feb 24 <b>£119</b>	Feb 24 <b>£154</b>	Jan 30 - Feb 27 <b>£174</b>	Mar 5 - Mar 26 <b>£249</b>	Mar 25 - Mar 26 <b>£284</b>
Mar 3 - Mar 24 <b>£129</b>	Mar 3 - Mar 24 <b>£164</b>	Mar 6 - Mar 27 <b>£184</b>	Apr 2 - Apr 16 <b>£274</b>	Apr 1 - Apr 16 <b>£294</b>
Mar 31 - Apr 7 <b>£144</b>	Mar 31 - Apr 7 <b>£184</b>	Apr 3 - Apr 17 <b>£209</b>	Apr 23 - May 14 <b>£294</b>	Apr 22 - May 14 <b>£319</b>
Apr 14 - May 12 <b>£154</b>	Apr 14 - May 12 <b>£199</b>	Apr 24 - May 15 <b>£219</b>	May 21 - Aug 20 <b>£319</b>	May 20 - Aug 20 <b>£349</b>
May 19 - Aug 25 <b>£174</b>	May 19 - Aug 25 <b>£219</b>	May 22 - Aug 21 <b>£239</b>	Aug 27 - Sep 17 <b>£294</b>	Aug 26 - Sep 17 <b>£319</b>
Sep 1 - Sep 15 <b>£154</b>	Sep 1 - Sep 15 <b>£209</b>	Aug 28 - Sep 18 <b>£229</b>	Sep 24 - Oct 15 <b>£284</b>	Sep 23 - Oct 15 <b>£304</b>
Sep 22 - Nov 24 <b>£144</b>	Sep 22 - Nov 24 <b>£184</b>	Sep 25 - Oct 23 <b>£209</b>	Dec 27 (Wed-Tue) <b>£609</b>	Dec 23 <b>£654</b>
Dec 27 (Wed-Fri) <b>£199</b>	Dec 27 (Wed-Sat) <b>£209</b>	Oct 30- Dec 11 <b>£219</b>		
Dec 30 (Sat-Mon) <b>£349</b>	Dec 30 (Sat-Tue) <b>£394</b>	Dec 23 (Sat-Wed) <b>£459</b>		



**HALF  
PRICE BAR**  
on Spring Breaks  
See page 34



**Leisureplex**  
HOLIDAY HOTELS

**2 NIGHTS**  
FROM  
**£109**  
PER PERSON

## CROIT ANNA HOTEL

Fort William, Inverness-shire



☎ 01397 702268 📧 [croitanna.fortwilliam@leisureplex.co.uk](mailto:croitanna.fortwilliam@leisureplex.co.uk)

Achintore Road, Fort William, Inverness-shire, PH33 6RR.

Fort William, the "Outdoor Capital of the UK" is not only an important tourist centre but also a splendid location from which to explore the magnificent Western Highlands. It is situated at the southern end of the Great Glen, on the shores of the crystal clear Loch Linnhe beneath towering Ben Nevis, Britain's highest mountain. The surrounding countryside has some of Britain's most spectacular scenery. Take a trip on the world famous Jacobite Steam as seen in the Harry Potter films and enjoy the stunning scenery of the West Highland Line.

In an idyllic position on the shores of Loch Linnhe, there are spectacular

views across the Loch from the hotel's restaurant, bar and lounge and from many of the bedrooms. The hotel provides an excellent base in which to relax and features a large restaurant, cosy quite lounge and a bar with dancefloor, where entertainment can be found most evenings. The outdoor terrace provides a great location to enjoy a drink, whilst admiring the stunning scenery and Loch.

Inverness, Oban, Skye, Iona and Speyside all make superb full days out and there are lots of places within half an hour's drive including Glenfinnan and, of course, the breathtaking Glencoe.

### Additional Information

- ✓ Free hotel car parking available
- ✓ Room with a view available
- ✓ Free Wi-Fi throughout
- ✓ No lift but ground floor rooms are available

### Nearby

- ✓ Loch Ness
- ✓ Isle of Skye
- ✓ Inverness
- ✓ Mallaig
- ✓ Oban
- ✓ Speyside

2 Nights (Fri - Sat)	3 Nights (Fri-Sun)	4 Nights (Mon-Thurs)	6 Nights (Sun-Fri)	7 Nights (Sat-Fri) or (Sun-Sat)
Tour 3430SD	Tour 4430SD	Tour 5430SD	Tour 432SD	Tour 430SD
Feb 24 <b>£109</b>	Feb 24 <b>£144</b>	Jan 30 - Feb 27 <b>£174</b>	Mar 5 - Mar 26 <b>£249</b>	Mar 25 - Mar 26 <b>£284</b>
Mar 3 - Mar 24 <b>£119</b>	Mar 3 - Mar 24 <b>£154</b>	Mar 6 - Mar 27 <b>£184</b>	Apr 2 - Apr 16 <b>£274</b>	Apr 1 - Apr 16 <b>£294</b>
Mar 31 - Apr 7 <b>£129</b>	Mar 31 - Apr 7 <b>£174</b>	Apr 3 - Apr 17 <b>£209</b>	Apr 23 - May 14 <b>£304</b>	Apr 22 - May 14 <b>£339</b>
Apr 14 - May 12 <b>£144</b>	Apr 14 - May 12 <b>£184</b>	Apr 24 - May 15 <b>£229</b>	May 21 - Aug 20 <b>£329</b>	May 20 - Aug 20 <b>£359</b>
May 19 - Aug 25 <b>£164</b>	May 19 - Aug 25 <b>£209</b>	May 22 - Aug 21 <b>£249</b>	Aug 27 - Sep 17 <b>£304</b>	Aug 26 - Sep 17 <b>£349</b>
Sep 1 - Sep 15 <b>£144</b>	Sep 1 - Sep 15 <b>£199</b>	Aug 28 - Sep 18 <b>£239</b>	Sep 24 - Oct 15 <b>£294</b>	Sep 23 - Oct 15 <b>£319</b>
Sep 22 - Nov 24 <b>£129</b>	Sep 22 - Nov 24 <b>£174</b>	Sep 25 - Oct 23 <b>£209</b>	Dec 27 (Wed-Tue) <b>£579</b>	Dec 23 <b>£624</b>
Dec 27 (Wed-Fri) <b>£174</b>	Dec 27 (Wed-Sat) <b>£209</b>	Oct 30 - Dec 11 <b>£219</b>		
Dec 30 (Sat-Mon) <b>£349</b>	Dec 30 (Sat-Tue) <b>£394</b>	Dec 23 (Sat-Wed) <b>£459</b>		



# For more details about SELF DRIVE HOLIDAYS

visit [alfatravel.co.uk](http://alfatravel.co.uk)

## Holiday Supplements

All of our Leisureplex Hotels are in superb locations and are perfectly placed to ensure you make the most of the region you're visiting. From your greeting at reception, to your waiter served meals, our helpful Employee Owners will be on hand to make your stay one to remember.

Our en-suite bedrooms come with comfy beds for a great nights sleep, tea and coffee making facilities, flat screen TV with Freeview, radio and hairdryer. Our hotels also have free Wi-Fi throughout.

\*Excludes Christmas and New Year Breaks. Double for sole available at £10 per day in Spring, Autumn and Festive periods and double the single supplement from May-Sep. For more details call 01257 248042. During special events, festivals, conferences and exhibitions certain rates may not be available. All rates are subject to availability.

Applicable to all Self Drive Holidays.  
Prices are per person.

Dates	Single Room				
	2nts	3nts	4nts	6nts	7nts
May - Sept	£20	£25	£30	£40	£40
Oct - Apr	£0*	£0*	£0*	£0*	£0*

Dates	Room with a View (includes Sea, Castle and Loch views)				
	2nts	3nts	4nts	6nts	7nts
Jan - Apr	£15	£20	£20	£30	£30
May - Sept	£20	£25	£30	£40	£40
Oct - Dec	£15	£20	£20	£30	£30

## Amazing SPRING OFFERS



### Free Drink Every Evening

Have a drink on us! Enjoy a complimentary glass of wine, beer or a soft drink with dinner every evening until the end of April, on all spring holidays staying at a Leisureplex Hotel.



### Half Price Bar

Book a spring break and take advantage of our fantastic half price bar offer on selected drinks, every evening up to the end of April on selected tours. Available on spring breaks staying in Blackpool, Bridlington, Dunoon, Fort William, Great Yarmouth, Ilfracombe, Newquay, Porthcawl or Sandown.



### Entertainment Every Evening

New for 2023, when you stay in a Leisureplex Hotel, you will find entertainment every evening on our spring breaks until the end of April.



### No Single Supplements

There are no single supplements on all holidays at Leisureplex Hotels departing up to the end of April. Availability of single rooms is limited, so early booking is highly recommended.



### Double for Sole Use Offer

If you fancy extra space whilst away, why not upgrade to a double or twin room for just £10 per day? Availability of rooms for sole use is limited and strictly subject to availability.

## Amazing AUTUMN OFFERS



### Autumn Single Saver

No single supplements at Leisureplex Hotels on Autumn 2023 holidays.



### Double as Single Offer

If you fancy extra space whilst away, why not upgrade to a double or twin room for just £10 per day? Availability of rooms for sole use is limited and strictly subject to availability.



### Entertainment at our Leisureplex Hotels

Leisureplex Hotels offer evening entertainment every evening in Autumn 2023 up to 30<sup>th</sup> October.

# Join one of our **COACH HOLIDAYS AT THE HOTEL**



**Do you prefer to make your own way to your chosen hotel but would still like to join one of our coaches on excursion days?**

By choosing to join one of our coach holidays at the hotel you have the freedom and comfort of travelling in your own car but also have the added benefit of being able to relax and enjoy the view on one of our fabulous included excursions which are part of our extensive range of coach holidays.

Our fantastic team of knowledgeable Employee Owner drivers help make the excursion days an experience to remember as they are on hand to share with you their 'hidden secrets' and top tips so that you really can get the most out of your holiday.

If you enjoy the independence of making your own way to your chosen resort and joining one of our coach holidays at the hotel sounds like the perfect combination for you, then why not request one of our **FREE** Alfa Travel holiday brochures? Featuring a fantastic collection of holidays, our unique range of coach holidays take in some of the 'must see' destinations from the world-famous to those magical 'hidden gems'.

Call **01257 248042** to request your copy today, or alternatively request our brochure online at [alfatravel.co.uk](http://alfatravel.co.uk).

**We look forward to seeing you soon!**



If you prefer to sit back, relax and enjoy the view, request our **FREE** Alfa Travel Coach Holidays brochures featuring holidays to the UK and Ireland.





## 3 Easy ways to BOOK WITH ALFA TRAVEL



Call our friendly Reservations Team on **01257 248042**

or email us on **reservations@alfatravel.co.uk**

**Our offices are open:** Mon-Fri: 8.30am - 6.30pm, Sat: 9.00am - 5.00pm,  
Sundays & Bank Holidays: 10.00am - 4.00pm.



Book Online at **alfatravel.co.uk**

The easiest way to book your holiday is online. It is totally secure, you can pay online using a debit or credit card and you will receive an instant booking confirmation.



Visit an approved Travel Agent

Visit an approved Travel Agent with this brochure or call us to find the location of your nearest appointed Travel Agent. There you will find friendly advisors who will be able to guide you through your booking and give you valuable feedback from other clients who have used Alfa Travel.



Find us on  
**facebook®**



Sign up for our  
email newsletter  
to keep up to date with all  
the latest news and offers!

A UK  
Employee Owned  
Travel Group



### Car Parking Facilities

Many of our Self Drive Hotel Breaks include **FREE parking**, however please check the details for your chosen hotel for full details and information.

### Ferries

Isle of Wight holidays include off peak ferry tickets in the holiday cost. However, a supplement will apply per car for all peak travel dates. Peak travel dates are subject to change, call our reservations team on **01257 248042** for more details.

Please note the Isle of Wight off peak ferry crossing is from Portsmouth to Fishbourne. If you would like to take your off peak ferry from Lymington to Yarmouth just let us know when you book your break.

### Insurance

Insurance for Self Drive tours is available, please call reservations on **01257 248042** for more details.

### Terms and Conditions

Bookings are confirmed on receipt of a deposit of £50 per person. There is no charge for using a debit or credit card. The following scale of cancellation charges shall apply to cancellation by the customer;

Period before departure in which you notify us	Percentage of holiday cost payable as cancellation charges
More than 84 days	Deposit is forfeited
42 to 84 days	Loss of Deposit
29 to 42 days	40%
15 to 28 days	55%
8 to 14 days	75%
Less than 8 days	100%

For full terms and conditions please visit our website at **alfatravel.co.uk** or request a copy of our Alfa Travel Coach Holiday brochures.